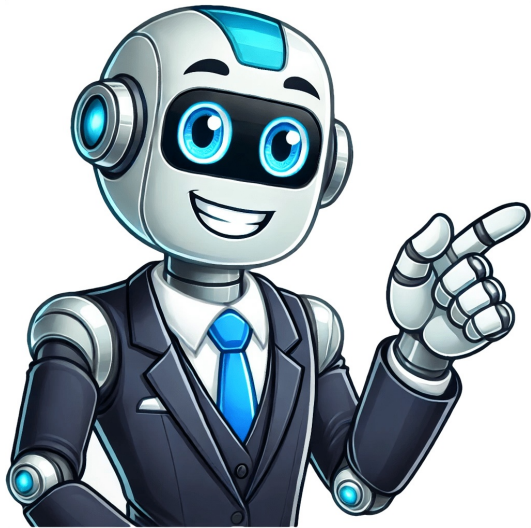


Continue



Bennet academy ct

Manchester Public Schools promotes equality and inclusivity in all aspects of education and employment, ensuring that individuals are treated without bias based on their race, color, religion, sex, age, national origin, ancestry, marital status, sexual orientation, gender identity, disability, or other protected characteristics. The district strives to create an environment where qualified individuals with prior convictions can be considered for employment and licensing opportunities. Manchester Public Schools also advocates for equal access to extracurricular activities like the Boy Scouts of America, fostering a culture of inclusion and respect among students, teachers, parents, and families.

Manchester Public Schools Commitment to Diversity and Inclusion The Manchester Public Schools system is committed to providing equal opportunities and affirmative action for all qualified persons, regardless of race, color, national origin, sex, age, disability, or any other protected characteristic. The district does not discriminate in employment or licensing against individuals with prior criminal convictions. Key Contacts: * School Counselors: Ms. Elizabeth Lewtan (ext. 70561), Mr. Andrew Ahlberg (ext. 40035), Ms. Felicina Petito (ext. 73578) * School Social Workers/Psychologists: Ms. Elana Plenby (ext. 75018), Mrs. Cheri Marks-Cavanna (ext. 70543), Mrs. Charity Korb (ext. 40037), Mr. Doug Klotzer, LCSW (ext. 40040) * School Psychologist: Dr. Wendy Landman (ext. 70544) * School Counselor/Support Services Secretary: Mrs. Yolanda Feliciano-Bedard (ext. 70500), Mrs. Tammy Sue Willey (ext. 70574) Student Demographics: The school has a diverse student body with approximately 452 students, including: * Students eligible for free lunch: 194 (43%) * Students eligible for reduced lunch: 46 (10%) Nearby Schools and Information: Elisabeth M. Bennet Academy is located in Manchester, CT, and serves grades 5-6. The school has a student-teacher ratio of 13:1 and an average student-teacher ratio for Hartford County of 14:1. School Reviews and Rankings: Please visit the U.S. Department of Education website for more information on school reviews and rankings. Elisabeth M. Bennet Academy, part of Manchester Public Schools, ensures equal treatment and opportunities for all students, staff, and visitors in accordance with Connecticut state and federal laws. This includes avoiding discrimination based on factors such as age, ancestry, marital status, national origin, race, religion, sex, or sexual orientation. The school also adheres to a policy of affirmative action and equal access to programs like the Boy Scouts of America. To create an inclusive online experience, the Your School website follows Web Content Accessibility Guidelines (WCAG) 2.0. These guidelines help make digital content accessible for people with disabilities and user-friendly for everyone. Manchester Public Schools strives to meet Level AA accessibility standards on their website and welcomes feedback from visitors who can contact them through email or phone.