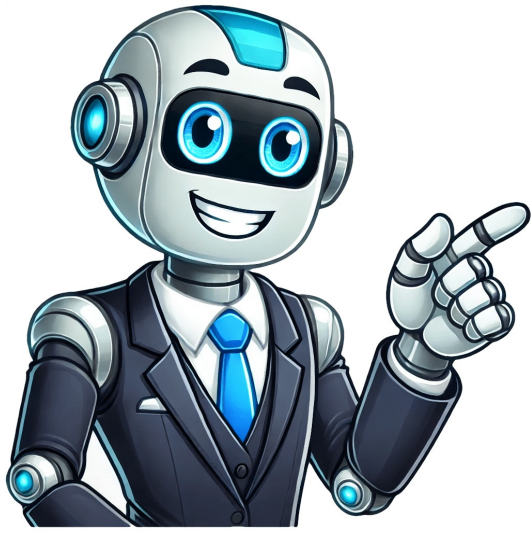


[Click Here](#)



English Deutsch Español Français Français Canadien Indonesia Italiano Nederlands Norsk Svenska Polski Português Ting Vit Türk Setting up the Linksys RE7350 and RE7310 to Range Extender mode The Linksys RE7350 Max-Stream WiFi 6 Range Extender and Linksys RE7310 MAX-STREAM WiFi 6 Range Extender can easily extend your WiFi to hard-to-reach locations in your home. This article will show you the steps on how you can set up your Linksys range extender to Range Extender mode. Before you start the setup process, make sure you have the following: An active 2.4 GHz or 5 GHz WiFi connection Your router's WiFi settings including the WiFi name and password/security key A wireless computer, tablet, or smartphone for setup 1. Plug the Linksys range extender into a power outlet. Wait for the light to change to blinking orange. 2. Using a computer or mobile device, connect your device to the Linksys range extenders default WiFi name, which is Linksys Extender Setup - xxx. You should be connected to this WiFi to start the setup process. QUICK TIP: The xxx are the last three characters of the Linksys range extenders MAC address. The MAC address of your device is located on the label at the back of the device. 3. In your computer or mobile device, open a browser and enter " " or "192.168.1.1" in the Address bar and press [Enter] to launch the setup. 4. Click Start Setup. NOTE: To skip the setup wizard, click on Manual Setup. If you need to run the setup wizard again, reset the extender. 5. Select the As a wireless range extender option then click Next. NOTE: If you are extending a dual-band network, wait until you see an entry with both of your WiFi names. Select it and click Next. If you only see one radio, click on the refresh button to see if both radios now appear on the same slot. Otherwise, continue with the setup and you may then be prompted to connect to the second radio. You can always configure your second network after setup in the Basic Settings section of the range extenders web-based setup page. You may also opt for the following: 6. Enter your WiFi password when prompted. 7. Review your extended wireless network settings and click Next. NOTE: The Ext is added to your extended network to differentiate your extended network from your main network. It is recommended that you either keep the Ext or that your range extender has unique network names. 8. The Spot Finder page only appears on Range Extender mode. This feature determines the signal strength between your range extender and your router. If your range extender is too far, unplug and move it closer to your router. Then, reconnect to the range extenders default WiFi name and access the web-based setup page. If you get the following messages, you may click on Connect anyway to complete the setup. Keep in mind that you still have to move the range extender according to the Spot Finders results. 9. Create an admin password to access your range extenders settings and click Next. 10. Register your product then click Next. 11. Your range extender is now set up. You can either print this page or close it. Once your range extender has a solid blue light, it means it is now connected to your network. To access the range extender settings, make sure to connect to its WiFi name and go to . Your Linksys range extender is now set up in Range Extender mode. The top header will read Dual Band Wireless Range Extender. Set your WiFi to warp speed and experience blazing-fast internet for your devices. Enjoy uncanny coverage across devices on your network for seamless experiences. Keep your dataour WiFi doesn't track, collect, or sell your info for machine learning or AI. Discrete and stylish, our products mesh well with any home, business, or office. We use materials like recyclable aluminum, recycled plastic, and foam-free packaging. Need additional information? Hard to understand Inaccurate/irrelevant content Missing/broken link How to Connect a Linksys WiFi Extender: A Step-by-Step Guide As the world becomes increasingly dependent on the internet, having a strong and reliable WiFi connection is no longer a luxury, but a necessity. However, as we move further away from the router, the WiFi signal strength tends to drop, causing connectivity issues and frustrating experiences. This is where WiFi extenders come in devices that amplify and rebroadcast the signal to areas with weak coverage. In this article, we'll provide a step-by-step guide on how to connect a Linksys WiFi extender and get you back online in no time. What You'll Need Before we dive into the process, ensure you have the following: A Linksys WiFi extender (e.g., Linksys RE6500, RE6300, or RE4500) Your router's username and password (or the credentials to log in to your router's web interface) A computer or mobile device with internet access to the router Step 1: Unbox and Physically Set Up Your Linksys WiFi Extender Take your Linksys WiFi extender out of the box and locate the power cord. Plug in the power cord to a nearby outlet, ensuring it's turned off. Connect your router to the extender using an Ethernet cable (if your router supports it) or a wireless connection. Place the extender in a central location to ensure maximum coverage, but not too close to the router (about 10-15 feet). Step 2: Access the Linksys WiFi Extenders Web Interface Open a web browser (e.g., Google Chrome, Mozilla Firefox) on your computer or mobile device. Type the Linksys WiFi extenders default IP address (usually 192.168.1.1 or 192.168.0.1) and press Enter. You'll be prompted to log in; enter the default admin username (admin) and password (admin) to access the web interface. Step 3: Configure the Linksys WiFi Extender Change the administrator password: Go to Management > Management Settings > Set Password, and enter a new, strong password for your extender. Set the WiFi network name and password: Navigate to Wireless Settings > Basic and enter your desired network name (SSID) and password (WEP/WPA/WPA2 passphrase). Configure the WiFi channel and mode: Select the most suitable channel (Auto, 2.4GHz, 5GHz) and mode (B/G/N, only) from the Wireless Settings > Advanced section. Step 4: Connect Your Computer or Mobile Device to the Linksys WiFi Extender Using a Computer: Connect to the Linksys WiFi extender (SSID) and enter the password (WEP/WPA/WPA2) to establish a connection. Using a Mobile Device: Go to your devices WiFi settings, select the Linksys WiFi extenders network (SSID), and enter the password (WEP/WPA/WPA2) to connect. Tips and Best Practices Positioning is key: Experiment with the extenders placement to find the optimal spot for maximum coverage and signal strength. Use the correct channel: If you're experiencing interference from neighboring networks, try switching to a different channel (Auto, 2.4GHz, or 5GHz) to improve performance. Regularly update your routers firmware: Keep your router and extender software up-to-date to ensure maximum compatibility and security. Troubleshooting Tips Slow or No Connection: Restart your router and extender, and check for physical obstructions or interference from other devices. Authentication Issues: Ensure your password is correct and try re-entering it; if problems persist, reset the extender to its factory settings (default username and password). By following this step-by-step guide, you should be able to successfully connect your Linksys WiFi extender and enjoy a stronger, more reliable internet connection. Remember to regularly update your router and extenders firmware, position the extender optimally, and troubleshoot any issues that may arise. Your friends have asked us these questions - Check out the answers! In todays digital age, a strong and reliable Wi-Fi connection is essential for our daily lives. However, with the increasing number of devices connected to our networks, its not uncommon to experience dead spots and weak signals. This is where a Wi-Fi extender comes in a device designed to amplify your routers signal, providing a stronger and more stable connection throughout your home or office. If youre a Linksys Wi-Fi extender user, youre in the right place. In this article, well take you through a step-by-step guide on how to connect your Linksys Wi-Fi extender, ensuring you get the most out of your device. Understanding Your Linksys Wi-Fi Extender Before we dive into the setup process, its essential to understand the basics of your Linksys Wi-Fi extender. Also known as a Wi-Fi booster or repeater, is a device that receives your routers signal, amplifies it, and then rebroadcasts it to extend coverage to hard-to-reach areas. Linksys offers a range of Wi-Fi extenders, each with its unique features and capabilities. Key Features to Look Out For When choosing a Linksys Wi-Fi extender, consider the following key features: Speed and Range: Look for an extender that supports the latest Wi-Fi standards (802.11ac or 802.11ax) and has a strong range to cover your entire home or office. Number of Devices Supported: If you have a large number of devices connected to your network, choose an extender that can support multiple devices simultaneously. Easy Setup and Management: Opt for an extender with a user-friendly interface and mobile app for easy setup and management. Preparing for Setup Before you start setting up your Linksys Wi-Fi extender, make sure you have the following: Your Linksys Wi-Fi Extender: This might seem obvious, but ensure you have the extender device and all its accompanying accessories, such as the power cord and Ethernet cable. Your Routers Information: Youll need your routers SSID (network name), password, and IP address. You can find this information on the underside of your router or in its documentation. A Computer or Mobile Device: Youll need a device connected to your routers network to access the extenders web-based setup page. Placement is Key: The placement of your Linksys Wi-Fi extender is crucial for optimal performance. Here are some tips to keep in mind: Place the Extender in a Central Location: Position the extender in a central location, equidistant from your router and the area where you want to extend coverage. Avoid Physical Barriers: Keep the extender away from physical barriers, such as walls, floors, and ceilings, which can weaken the signal. Keep it Elevated: Place the extender on a high shelf or mount it on a wall to minimize interference from other devices. Setting Up Your Linksys Wi-Fi Extender Now that youve prepared everything, its time to set up your Linksys Wi-Fi extender. Follow these steps: Step 1: Connect to the Extenders Network Connect your computer or mobile device to the extenders network using the SSID and password provided on the underside of the device or in its documentation. Open a web browser and navigate to the extenders web-based setup page (usually). Step 2: Configure the Extenders Settings Log in to the extenders web-based setup page using the admin username and password (usually admin for both). Click on the Wireless Settings or Wi-Fi Settings tab and select your routers SSID from the list of available networks. Enter your routers password and click Apply to save the changes. Step 3: Configure the Extenders Network Settings Click on the Network Settings or LAN Settings tab and configure the extenders network settings, such as the IP address, subnet mask, and gateway. Make sure the extenders network settings match your routers settings. Step 4: Save and Reboot Click Apply to save all the changes youve made. Reboot the extender by clicking on the Reboot button or by unplugging it from the power outlet and plugging it back in. Troubleshooting Common Issues If you encounter any issues during the setup process, dont worry. Here are some common issues and their solutions: Extender Not Connecting to Router: Check that the extender is properly connected to the routers network and that the routers SSID and password are correct. Extender Not Broadcasting Signal: Ensure that the extender is properly configured and that the wireless settings are enabled. Using the Linksys Wi-Fi Extender App Linksys offers a mobile app for easy setup and management of your Wi-Fi extender. The app allows you to: Monitor Your Network: View your networks performance and connected devices. Configure Settings: Adjust your extenders settings, such as the wireless channel and network name. Update Firmware: Keep your extenders firmware up to date with the latest features and security patches. Conclusion Connecting your Linksys Wi-Fi extender is a straightforward process that requires some basic knowledge of networking and device configuration. By following the steps outlined in this article, youll be able to extend your Wi-Fi coverage and enjoy a stronger, more reliable connection throughout your home or office. Remember to place your extender in a central location, avoid physical barriers, and keep it elevated to ensure optimal performance. If you encounter any issues, refer to the troubleshooting section or contact Linksys support for assistance. What is a Wi-Fi extender and how does it work? A Wi-Fi extender is a device that amplifies the wireless signal from your router to extend its coverage to hard-to-reach areas of your home or office. It works by receiving the wireless signal from your router, amplifying it, and then rebroadcasting it to extend the coverage area. By using a Wi-Fi extender, you can eliminate dead spots and enjoy a stronger, more reliable wireless connection throughout your space. This is especially useful for large homes, offices, or areas with thick walls or other obstacles that can interfere with the wireless signal. Why do I need a Linksys Wi-Fi extender? You may need a Linksys Wi-Fi extender if youre experiencing weak or dropped wireless connections in certain areas of your home or office. This can be due to a variety of factors, including the distance from the router, physical barriers, or interference from other devices. By installing a Linksys Wi-Fi extender, you can boost your wireless signal and enjoy a faster, more reliable connection. This is especially useful for streaming video, online gaming, or other applications that require a strong and stable internet connection. What are the benefits of using a Linksys Wi-Fi extender? Using a Linksys Wi-Fi extender can provide several benefits, including improved wireless coverage, increased internet speeds, and reduced dropped connections. By extending the range of your wireless network, you can enjoy a stronger and more reliable connection throughout your home or office. Additionally, Linksys Wi-Fi extenders are easy to set up and use, and theyre compatible with a wide range of devices, including smartphones, laptops, and smart home devices. This makes them a convenient and effective solution for improving your wireless network. How do I set up my Linksys Wi-Fi extender? To set up your Linksys Wi-Fi extender, simply plug it into a power outlet and follow the instructions provided in the user manual. Youll need to connect to the extenders wireless network, open a web browser, and follow the on-screen instructions to complete the setup process. During the setup process, youll be prompted to enter your routers wireless settings, including the network name and password. Once youve completed the setup process, your Linksys Wi-Fi extender will be ready to use, and you can start enjoying a stronger and more reliable wireless connection. Can I use my Linksys Wi-Fi extender with any router? Linksys Wi-Fi extenders are compatible with most routers, but its always a good idea to check compatibility before purchasing. You can check the Linksys website for a list of compatible routers or consult with a customer support representative for more information. In general, Linksys Wi-Fi extenders work with most standard routers, including those from popular manufacturers like Linksys, Netgear, and TP-Link. However, some routers may require special configuration or setup, so its best to check the user manual or online documentation for more information. How do I troubleshoot issues with my Linksys Wi-Fi extender? If youre experiencing issues with your Linksys Wi-Fi extender, there are several troubleshooting steps you can take. First, try restarting the extender and your router to see if this resolves the issue. You can also try moving the extender to a different location or adjusting its position to improve the wireless signal. If youre still experiencing issues, you can consult the user manual or online documentation for more troubleshooting tips. You can also contact Linksys customer support for assistance, either by phone, email, or online chat. The Linksys website also has a range of resources and FAQs to help you troubleshoot common issues. Is my Linksys Wi-Fi extender secure? Yes, Linksys Wi-Fi extenders have a range of security features to protect your wireless network. These include WPA2 encryption, which is the latest and most secure wireless encryption standard. You can also set up a guest network, which allows visitors to access the internet without accessing your main network. Additionally, Linksys Wi-Fi extenders have a range of other security features, including firewall protection and access controls. You can also set up parental controls to restrict access to certain websites or online content. By using a Linksys Wi-Fi extender, you can enjoy a secure and reliable wireless connection. Welcome to the comprehensive guide on how to connect your Linksys WiFi Extender! If you have been experiencing weak or dead spots in your homes wifi coverage, adding a wifi extender can be a great solution to extend the range of your existing wifi network. The Linksys WiFi Extender is a reliable and user-friendly device that can help boost your wifi signal and provide a stronger connection throughout your home or office. In this guide, we will walk you through the step-by-step process of setting up and connecting your Linksys WiFi Extender. Whether you are a beginner or have some technical knowledge, this guide is designed to be easy to follow and will ensure you can get your wifi extender up and running in no time. Before we dive into the setup process, its important to understand how a wifi extender works. Essentially, a wifi extender, also known as a wifi booster or wifi repeater, captures the existing wifi signal from your router and retransmits it, amplifying the signal and extending its range. This allows you to have a stronger and more reliable wifi connection in areas where the signal is typically weak or nonexistent. The Linksys Wifi Extender is a popular choice among users due to its reliability, performance, and user-friendly interface. With its easy setup process and intuitive web-based interface, connecting your Linksys Wifi Extender is a straightforward task that can be completed within a few minutes. In the following sections, we will cover each step in detail, including unpacking the wifi extender, connecting it to a power outlet, accessing the setup page, configuring the settings, connecting it to your existing wifi network, and optimizing its placement for maximum coverage. So, without further ado, lets get started with setting up your Linksys Wifi Extender! Step 1: Unpacking the Linksys Wifi Extender Before you can start setting up your Linksys Wifi Extender, you need to unpack it and ensure that you have all the necessary components. Lets walk through this first step: Locate the package: Start by finding the box containing the Linksys Wifi Extender. It should have the Linksys logo and product information clearly displayed on the packaging. Open the box: Carefully remove the tape or seals from the box and open it to reveal the contents. Check the contents: Take a moment to ensure that you have all the components required for the setup. The Linksys Wifi Extender package typically includes the wifi extender unit, a power adapter, an Ethernet cable (if needed), and any additional documentation or user guides provided by Linksys. Inspect for damage: Check the wifi extender unit and other components for any signs of damage or defects. If you notice any issues, contact Linksys support for assistance. Its important to note that some wifi extender models may have additional components or accessories specific to that particular model. Refer to the user guide or documentation provided with your Linksys Wifi Extender for more details on the specific contents of your package. Once you have unpacked the Linksys Wifi Extender and verified that all the components are present and in good condition, you are ready to proceed to the next step: connecting the wifi extender to a power outlet. Step 2: Connecting the Linksys Wifi Extender to a Power Outlet Now that you have unpacked the Linksys Wifi Extender, its time to connect it to a power outlet. Follow these steps: Find a suitable location: Choose a location for your wifi extender that is near your existing wifi router and within range of the areas where you want to improve the wifi signal. This will ensure that the wifi extender can effectively capture and amplify the wifi signal. Plug it in: Take the power adapter provided with your Linksys Wifi Extender and connect it to the power input port on the unit. Then, plug the other end of the power adapter into a nearby power outlet. Make sure the power outlet is functioning properly. Turn it on: Once the wifi extender is plugged in, locate the power button or switch on the unit and turn it on. You may see indicator lights on the unit showing that it is receiving power. Wait for initialization: Give the wifi extender a few moments to boot up and initialize. During this time, the indicator lights may flash or change colors. Once the initialization is complete, the indicator lights should stabilize. Its important to note that some wifi extender models may have a different power setup or additional features. Refer to the user guide or documentation provided with your Linksys Wifi Extender for specific instructions related to your model. Now that you have successfully connected the Linksys Wifi Extender to a power outlet, you can move on to the next step: connecting the wifi extender to a computer or mobile device. Step 3: Connecting the Linksys Wifi Extender to a Computer or Mobile Device After connecting the Linksys Wifi Extender to a power outlet, the next step is to establish a connection between the wifi extender and your computer or mobile device. Heres how you can do it: Locate the wifi network: On your computer or mobile device, navigate to the list of available wifi networks. Look for a network name that starts with Linksys Extender or a similar identifier. Connect to the wifi extender network: Select the wifi extender network from the list of available networks. You may be prompted to enter a password or passphrase. If so, refer to the documentation that came with your wifi extender or look for a sticker on the unit itself for the default password. Wait for the connection: Once you have entered the password and connected to the wifi extender network, wait for a moment as your computer or mobile device establishes a connection with the wifi extender. Its worth noting that the connection process may vary slightly depending on your operating system and device. If you encounter any difficulties during this step, refer to the user guide or documentation provided by Linksys for troubleshooting tips specific to your device. Once you have successfully connected your computer or mobile device to the wifi extender, you are ready to proceed to the next step: accessing the setup page and configuring the settings. Step 4: Accessing the Linksys Wifi Extenders Setup Page Now that you have successfully connected your computer or mobile device to the Linksys Wifi Extender, its time to access the setup page. This page allows you to configure the settings and customize the wifi extender according to your preferences. Heres how you can access the setup page: Launch a web browser: Open your preferred web browser on your computer or mobile device. It could be Google Chrome, Mozilla Firefox, Safari, or any other browser that you commonly use. Enter the setup page address: In the address bar of your web browser, type in the default IP address of the Linksys Wifi Extender. This can typically be found in the user guide or documentation that came with your wifi extender. The most common default IP address for Linksys devices is 192.168.1.1. Press Enter: After entering the IP address, press the Enter key on your keyboard or click the Go button in the browser. This action will initiate the connection to the setup page. Enter login credentials: On the setup page, you will be prompted to enter your login credentials. The default username and password can be found in the user guide or on a sticker located on the wifi extender unit. Enter the credentials to gain access to the setup page. Explore the setup page: Once logged in, you will have access to the setup page of the Linksys Wifi Extender. Here, you can configure various settings, such as wireless network name (SSID), password, security settings, and more. Take your time to explore the different options and customize the wifi extender according to your needs. Its important to note that changing the default login credentials is recommended to ensure the security of your wifi extender. Refer to the user guide or documentation for instructions on how to change the username and password for your specific model. Congratulations! You have successfully accessed the setup page of the Linksys Wifi Extender. In the next step, we will guide you through the process of configuring the wifi extender settings to connect it to your existing wifi network. Step 5: Configuring the Linksys Wifi Extender Settings With access to the setup page of the Linksys Wifi Extender, you can now configure the settings to connect it to your existing wifi network. Follow these steps to complete the configuration: Locate the setup wizard: On the setup page, look for a Setup Wizard or similar option. This wizard will guide you through the process of configuring the wifi extender settings. Start the setup wizard: Click on the Setup Wizard or Start button to begin the configuration process. The wizard will prompt you to provide necessary information about your existing wifi network. Select the network: Choose your existing wifi network from the list of available networks. This will be the wifi network that you want to extend using the Linksys Wifi Extender. Enter network credentials: Enter the password or passphrase for your existing wifi network when prompted. This ensures that the wifi extender can connect to your network securely. Review and save settings: Once you have entered the necessary information, review the configuration settings displayed on the setup page. If everything looks correct, click the Save or Apply button to save the settings and continue. During the configuration process, you may also have the option to customize other settings, such as the wifi networks SSID (name), channel, and security settings. Feel free to explore these options and make changes as desired, although the default settings are usually suitable for most users. After saving the settings, the Linksys Wifi Extender will apply the changes and establish a connection to your existing wifi network. This process may take a few moments, so be patient and avoid any interruptions during this time. Congratulations! You have successfully configured the Linksys Wifi Extender settings to connect it to your existing wifi network. In the next step, we will guide you on how to verify the connection and ensure that your wifi extender is working correctly. Step 6: Connecting the Linksys Wifi Extender to Your Existing Wifi Network Now that you have configured the Linksys Wifi Extender settings, its time to connect it to your existing wifi network. By doing so, the wifi extender will amplify your networks signal and extend its coverage. Follow these steps to connect the wifi extender to your existing wifi network: Open the wifi settings: On your computer or mobile device, navigate to the wifi settings menu. Locate the wifi extender network: In the list of available wifi networks, look for the network name of your Linksys Wifi Extender. This network name typically starts with Linksys Extender or a similar identifier. Connect to the wifi extender network: Select the wifi extender network from the list and connect to it. You may be prompted to enter a password or passphrase. Use the same password that you configured in the previous steps. Wait for the connection: After entering the password, wait for your computer or mobile device to establish a connection with the Linksys Wifi Extender. This process may take a moment. Once the connection is established, your computer or mobile device will be connected to the Linksys Wifi Extender, which, in turn, is connected to your existing wifi network. This means that you can now enjoy a stronger and extended wifi signal throughout your home or office. Its worth noting that the wifi extender network may have the same SSID (network name) as your existing wifi network. This allows your devices to seamlessly switch between the router and the extender as you move around your home. With the Linksys Wifi Extender successfully connected to your existing wifi network, you are now ready to verify the connection and ensure that your wifi extender is working correctly. Step 7: Verifying the Linksys Wifi Extender Connection After connecting the Linksys Wifi Extender to your existing wifi network, its important to verify that the connection is working properly. Follow these steps to ensure that your wifi extender is functioning as intended: Move to an area with weak wifi signal: Identify an area in your home or office where the wifi signal is typically weak or nonexistent. Check the wifi signal strength: On your computer or mobile device, check the wifi signal strength in the area. You should notice a significant improvement in the strength and stability of the wifi signal. Test internet connectivity: Open a web browser and visit a website to test the internet connectivity. The webpage should load quickly and smoothly, indicating that your Linksys Wifi Extender is successfully transmitting the wifi signal and providing internet access. Move around the coverage area: Walk around your home or office and test the wifi connectivity in different areas. The wifi signal should remain strong and stable, allowing you to use the internet and connect to devices without any interruptions. If you notice any issues with the connection or experience weak wifi signal in certain areas, consider adjusting the placement of your Linksys Wifi Extender. You can try moving it to a different location, closer to areas with weak signal, to achieve better coverage. Its worth mentioning that factors such as walls, furniture, and other obstructions can affect the wifi signals range and strength. Experimenting with the placement of your wifi extender can help optimize the coverage and overall performance. By following these steps and verifying the Linksys Wifi Extender connection, you can ensure that your devices have a strong and reliable wifi signal throughout your home or office. Step 8: Placing the Linksys Wifi Extender for Optimal Coverage The placement of your Linksys Wifi Extender plays a crucial role in ensuring optimal coverage and performance. By strategically positioning the wifi extender, you can maximize its signal range and eliminate any potential dead spots in your home or office. Follow these guidelines to place the wifi extender for optimal coverage: Analyze your existing wifi coverage: Take note of areas in your home or office where the wifi signal is weak or nonexistent. These are the areas where you will focus on improving the coverage. Position the wifi extender within range: Place the Linksys Wifi Extender within range of both your existing wifi router and the areas with weak signal. Ideally, the extender should be placed halfway between the router and the areas where you need to enhance the wifi signal. Minimize obstructions: Ensure that there are no physical obstructions, such as walls, large furniture, or appliances, between the wifi extender and your devices. These obstacles can weaken and block the wifi signal. Avoid interference: Keep the wifi extender away from devices that may cause interference, such as cordless phones, microwave ovens, baby monitors, and Bluetooth devices. These can interfere with the wifi signal and degrade the performance. Consider the antenna orientation: If your Linksys Wifi Extender has adjustable antennas, try positioning them vertically or at a 45-degree angle to maximize the wifi signal coverage. Experiment with different antenna positions for the best results. Test the signal strength: Walk around your home or office and test the wifi signal strength using your devices. If you still experience weak signal in certain areas, adjust the placement of the wifi extender accordingly to improve coverage. Keep in mind that the wifi signals strength and range can vary depending on various factors, including the construction of your building, distance from the router, and interference from other devices. Regularly monitoring and adjusting the placement of your wifi extender can help maintain optimal coverage over time. By following these guidelines and placing your Linksys Wifi Extender in the optimal position, you can ensure that all areas of your home or office have a strong and reliable wifi signal, allowing you to enjoy seamless internet connectivity. Conclusion Congratulations! You have successfully set up and connected your Linksys Wifi Extender, expanding the coverage of your existing wifi network. By following the step-by-step guide, you have learned how to unpack the wifi extender, connect it to a power outlet, establish a connection to your computer or mobile device, access the setup page, configure the settings, connect the extender to your existing wifi network, verify the connection, and optimize the placement for optimal coverage. With the Linksys Wifi Extender in place, you can now enjoy a stronger and more reliable wifi signal throughout your home or office. Say goodbye to dead spots and weak signal areas as you experience seamless internet connectivity on all your devices. Remember to regularly monitor the performance of your wifi extender and adjust its placement if needed. Factors such as physical obstructions, interference from other devices, and changes in your homes layout may affect the wifi signals strength and range. By keeping these considerations in mind, you can ensure that your wifi extender continues to provide optimal coverage and performance. If you encounter any issues or have further questions regarding your Linksys Wifi Extender, refer to the user guide or documentation provided by Linksys. They can provide additional troubleshooting tips and assistance specific to your model. Thank you for choosing Linksys and taking the time to set up your wifi extender. We hope that this guide has been helpful and that you now enjoy an enhanced wifi experience. Happy browsing! 35+ Years of Trust, Innovation, and Customer Experience Linksys is the iconic Home WiFi brand proven at delivering Home WiFi with incredible speed, range, and reliability that for over 35 years has earned the trust of Internet Service Providers worldwide. At Linksys, we always do our utmost to engineer simplicity, so your subscribers do not experience complexity. Need additional information? Hard to understand Inaccurate/irrelevant content Missing/broken link Share copy and redistribute the material in any medium or format for any purpose, even commercially. Adapt remix, transform, and build upon the material for any purpose, even commercially. The licensor cannot revoke these freedoms as long as you follow the license terms. Attribution You must give appropriate credit , provide a link to the license, and indicate if changes were made . You may do so in any reasonable manner, but not in any way that suggests the licensor endorses you or your use. Share Alike If you remix, transform, or build upon the material, you must distribute your contributions under the same license as the original. No additional restrictions You may not apply legal terms or technological measures that legally restrict others from doing anything the license permits. You do not have to comply with the license for elements of the material in the public domain or where your use is permitted by an applicable exception or limitation . No warranties are given. The license may not give you all of the permissions necessary for your intended use. For example, other rights such as publicity, privacy, or moral rights may limit how you use the material.

How to connect linksys wifi extender to router. How do i connect my linksys extender to a new wifi. How do i setup a linksys wifi extender. How do i connect my linksys wifi extender to a new network. How to connect linksys wifi router. How to use linksys wifi extender. How does linksys wifi extender work. How do i connect my linksys wifi extender to a new router.