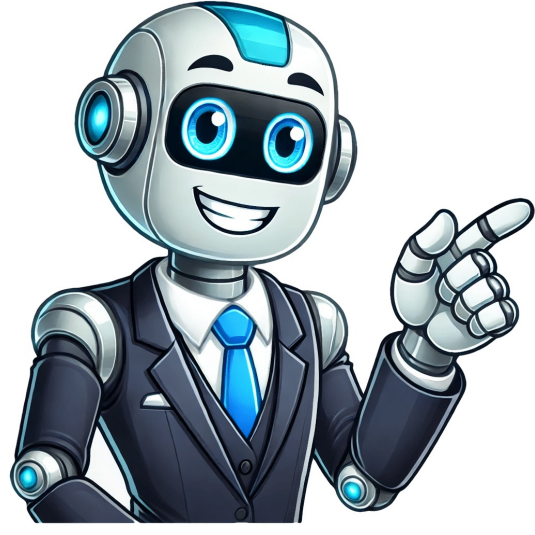


Click to prove  
you're human































To find your friends and family, you can use the Find Hub app to: Share your location with others Find others location on a map Take a few different actions for those shares Set up your Find Hub app To set up your Find Hub app on your device: Sign in to the Find Hub app. Grant app location permissions to display a blue dot on your map and calculate friends distance from you. If you don't grant the Find Hub app location permission, you can still use the app to find your lost devices and to share your location, but you won't be able to see your blue dot. Start & stop a shareStart a share If you don't have any shares, to get started, tap Start share. You can find a preview of the information that you can share with your recipient, like: Location Name Avatar Address Battery percentage Choose the duration of the share you want to start from either: One hour Until the end of the day (ends at 11:59 PM users time) Until you stop the share A custom duration Choose one or multiple people from your recipients by: Using the suggested list: To start your share, tap Create share. You can search for specific contacts with the magnifying glass within the pre-populated list. If the recipient's device has the Find Hub app or Google Maps installed and notifications on, they'll receive a notification to let them know that you shared your location with them. If they don't, they'll receive an email. Sharing with a link: Choose your selected duration and tap Get link to share. This opens up a way for you to choose commonly used apps, message threads, and other groups to send the link with. Anyone with the link can see your location and other personal information. Until you stop shares can't be created as a link share. Tip: If you already have shares on your account in other Google apps, like Maps, Family Link, or Personal Safety, you can view them in Find Hub automatically. Stop a share Tap on the user you'd like to stop sharing with. Tap the Stop sharing button. From the confirmation dialog, you can either: Cancel: Your share stays and you go back to the details page. Confirm: If the user is also sharing with you, you'll stay on the contact detail page and the button will no longer be blue. You can start a new share if you want. If you're the only one sharing, you'll be sent back to the list of shares. On your device, you can also manage your location shares through Find Hub. Under Location Sharing tab, on the top right, select your profile Location Sharing settings. Tips: Location shares are associated with your account. If you stop a share, it stops for your account, and for all apps using Google Location Sharing, including Find Hub. You can also manage your shares in other Google location sharing apps, such as Google Maps. You can also manage your locations shares in your Google Location Sharing settings page: On your Android device, open Settings. Tap Location Location Services Google Location Sharing. Actions you can take per shareGet directions Tap on the user you'd like to get directions to Get directions. Google Maps will open with a route to that person's location. If the user keeps moving, the route won't continue to update since this is a one-time direction only. Hide a user Tap the user you'd like to hide More . Select Hide from map. On the confirmation dialogue pop-up, confirm if you want to hide the selected person. You can also stop sharing with that person or not with the checkmark. You'll be sent back to the list of shares with a confirmation. To find the people you hid from your map: Scroll to the bottom of your list of shares. On the right of Hidden from Map, tap Arrow down . To unhide someone from your map: Scroll to the bottom of your list of shares. On the right of Hidden from Map, tap Arrow down . Tap the user you'd like to unhide. Tap More . Select Unhide from map. Block a user Tap the user you'd like to block. Tap More . Select Block. From the confirmation dialog, select Confirm if you want to block the person. You'll be sent back to the list of shares with a confirmation afterwards. If you want to unblock someone, on your Google account, visit your Blocklist. Tip: When you block a person, it also applies to a variety of Google apps and services, like Photos and Maps. Learn how to block or unblock people's accounts. Refresh You can manually refresh a person's location. To do this: Tap the user whose location you'd like to refresh. Tap More . Select Refresh. The dropdown menu will collapse and you'll find a progress indicator until: Timestamp changes to now: The person's location is updated. Timestamp didn't change: The person's location wasn't retrieved possibly due to: Their device was either offline or turned off. Location services were turned off. Location sharing was turned off. Tip: The person's location will also be automatically refreshed while you use the app. How to use and understand your list of shares Manage your list and map To manage your list and map, you can: Use Filtering. Sharing with you: You can find people who share their location with you. It includes people you're not sharing back with and people you're sharing back with. You're sharing with: You can find people you're sharing your location with. It includes people who aren't sharing back with you and people who are sharing back with you. Neither: You can view all of your shares, including incoming, outgoing, and people you are sharing with who are also sharing with you. Tip: You can't select both filters at the same time. Center your location within the map. If you grant Find Hub access to your location, you can center your location within your map view. At the bottom right corner of the map, tap the My Location . Use the + button to start a new share. How to read the list Map It shows the people who share their location with you and aren't hidden. Hidden list If you hide a user from appearing on your map, they'll be placed in a collapsible list at the bottom of the list of shares. You can unhide them: Select their name. In their contact details page, from the overflow menu, unhide them. Legend for all of the information shown about a person Users who share their location with you: Name Avatar Current location address Location last updated timestamp If they can or can't find your location Can see your location: If you've shared your location with them and they can find it. Users who share their location with you, but you've hidden: Name Grayed out avatar If they can or can't see your location Can see your location: If you've shared your location with them and they can find it. Location sharing settings You can stop your device from sharing your real-time location without needing to stop a share in the Find Hub app. Learn how to manage your location sharing settings. Tip: You can still use other device location services, like navigation in Maps, when you turn off location sharing in the settings. Related resources Post to the help community Get answers from community members Current imagery automatically displays in Google Earth. To discover how images have changed over time or view past versions of a map on a timeline: On your device, open Google Earth. Search for places. To view a map over time, you can either: In the toolbar, click Historical Imagery . Click View Historical Imagery. This feature isn't available if you're using the Map basemap. To enable this feature, change your basemap to Satellite. Select how you want to view the map. To turn on historical imagery view, at the top left, click Historical imagery . To turn on timelapse, at the top left, click Timelapse . A timeline appears. At the top right, click the timeline to explore the map over time. To find a specific time, you can either: Click the year you want to view in the timeline. Click Previous or Next . To lock the latest imagery, click Last page . To minimize the historical imagery toolbar, at the top right, click Collapse . At the top left, the toolbar remains active as a floating chip. To deactivate historical imagery, click Historical imagery . Tips: To optimize your viewing experience, 3D buildings feature is turned off when historical imagery is turned on. Satellite image availability is represented on the slider. Image availability may change as you explore. Years are marked by dots. Smaller dots indicate additional months. If a previously selected year becomes unavailable, its dot on the slider turns gray. Global coverage varies. Related resources Find & use location coordinates Import data from GPS devices Post to the help community Get answers from community members If you lose an Android device or Wear OS watch, you can find, secure, or erase it remotely. You can also help a friend find, secure, or erase their lost device with the Find Hub app. If you've added a Google Account to your device, Find Hub is automatically turned on. By default, your device is set to the "With network in high-traffic areas only" setting so that it stores encrypted recent locations with Google and helps find offline devices as part of a crowdsourced network of Android devices. To get help from the network finding your items on your Android device, set a PIN, pattern, or password. Your devices most recent location is available to the first account activated on the device. Tip: To find, secure, or erase your Wear OS device, connect it to Wi-Fi or mobile data. Be ready to find a lost Android device. To secure or erase an Android device, make sure the device: Has power Is connected to mobile data or Wi-Fi Is signed in to a Google Account Has Find Hub turned on Is visible on Google Play If you use 2-step Verification, go to 2-step Verification backups. Find, secure, or erase a device remotely Important: If you find your device after you erase it, to use your device again, you need your Google Account password. Learn about device protection. Use the Find Hub app On another Android phone or tablet, open the Find Hub app . Sign in. If your own device is lost: Tap Continue as [your name]. If you're helping a friend: Tap Sign in as guest and let your friend sign in. From the listed devices, select the device you want to locate. The lost device gets a notification. When you manage a Google Account with Family Link, your child's supervised devices automatically appear in the Family devices tab in Find Hub. You may be prompted to provide the lock screen PIN for the Android device you want to locate. This applies to Android 9 or higher. If the device you want to find doesn't use a PIN, or runs Android 8 or lower, you may be prompted for your Google password. On the map, you get information about the device's location. To navigate to a lost device, tap Get directions. Your location is estimated from sources like: GPS: We use satellites to know your location up to around 20 meters. When you're inside buildings or underground, the GPS is sometimes inaccurate. Wi-Fi: The location of nearby Wi-Fi networks helps us know where you are. Cell towers: Your connection to mobile data can be accurate up to a few thousand meters. Learn how to improve your locations accuracy. If the device is within 10 meters, you can get a shape that fills in as you get closer to your device: Tap Find nearby. This may take a few seconds to update. The radius displayed around your location pin is an indication of our confidence in location accuracy. If your device's current location can't be found, you may still find its last known location, if available. Select what you want to do: Play sound: Rings your device at full volume for 5 minutes, even if it's set to silent or vibrate. To play a sound, wireless headphones need to be turned on and earbuds need to be outside the case. Mark as lost: Locks your device with your PIN or password. If you don't have a lock, you can set one. To help someone return your device to you, you can add a message or phone number to the lock screen. To delete a device you can't find: Follow the steps to erase, reset, or remove your device. Erase, reset, or remove your device You can delete your device if you can't find it. Important: These steps permanently delete all data on your device, but may not delete SD cards. After the device is erased, its location won't be available in Find Hub. You can use Find Hub on the web, an Android device, or a friend's Android device in guest mode: On the device, open the Find Hub app . Select the device or accessory you want to reset or remove. Select Settings. To erase an Android device: Tap Factory reset (device name) . To delete an accessory: Tap Remove device. Tip: If you want to use an accessory again with Find Hub, to set it up again on Find Hub, you can go to Bluetooth settings. Find your device with your Wear OS watch Find your Android device's IMEI number To disable the device, your mobile service provider can locate your device's IMEI number. You can find your device's IMEI number in your phone's settings or with Find Hub. Important: Some devices, like Google Pixel Tablet, don't have IMEI numbers. To locate your device's IMEI with the Find Hub app: Open the Find Hub App . Select the device you want to locate. Tap Settings . To locate your device's IMEI on a web browser: Go to android.com/find. Next to the device, select Settings . Mark an accessory as lost When you mark your accessory as lost, you can leave a phone number, email address, and a message on the lock screen. Your contact information can also be accessed by someone else who identifies your accessory as lost so they can return your device to you. Your accessory will automatically be marked as found once it's near the Android device you use to connect your accessory to. Tip: We'll also send you a notification once the location has been detected on the Find Hub network. Identify a lost accessory or tracker tag & return it to its owner You can help return someone's accessory that they've marked as lost in the Find Hub app. Unlock the screen of your Android device. For Android 12 or earlier, make sure Location is turned on. Learn how to turn on location. Hold the item to the back of your phone or tablet. If the device owner left contact information or a message, you can find it on your screen. Get more help If you can't find your lost or stolen device, learn more about how to secure your Google Account. Post to the help community Get answers from community members SearchClear searchClose searchGoogle appsMain menu If you forgot your password or username, or you can't get verification codes, follow these steps to recover your Google Account. That way, you can use services like Gmail, Photos, and Google Play. Tips: Wrong guesses won't kick you out of the account recovery process. There's no limit to the number of times you can attempt to recover your account. If you use an account through your work, school, or other group, these steps might not work. Check with your administrator for help. To recover an account for a child under 13 (or the applicable age in your country) you can reset your child's password. Forgot your password Forgot the email address you use to sign in To find your username, follow these steps. You need to know: A phone number or the recovery email address for the account. The full name on your account. Follow the instructions to confirm its your account. You'll find a list of usernames that match your account. Someone else is using your account If you think someone is using your Google Account without your permission, follow the steps to recover a hacked or hijacked Google Account or Gmail. If you have another problem, get help signing in. Recover a deleted Google Account If you recently deleted your Google Account, you can follow the steps to recover your account. Still can't sign in Create a new account If you can't sign in, try these tips for account recovery. If you still can't recover your account, you can create a new Google Account. When you do, you can follow these steps to avoid getting locked out of your Google Account. Avoid account & password recovery services For your security, you can't call Google for help to sign into your account. We don't work with any service that claims to provide account or password support. Do not give out your passwords or verification codes. Post to the help community Get answers from community members You can get apps, games, and digital content for your device using the Google Play Store app. The Play Store app comes pre-installed on Android devices that support Google Play, and can be downloaded on some Chromebooks. On your device, go to the Apps section. Tap Google Play Store . The app will open and you can search and browse for content to download. If you have issues locating the Play Store app, or opening, loading or downloading content in the app, it could be due to a number of reasons. To troubleshoot these issues, try the following topics: can't find the Play Store App The Play Store doesn't open or load any content Downloads from the Play Store don't work Post to the help community Get answers from community members

**Can't find contact seller on amazon. Amazon seller nederland. Where is contact seller on amazon. How do i find seller information on amazon. How to sell on amazon netherlands. How to find amazon fba wholesale products.**

- [http://superazs.ru/\\_/images/news/file/20d09c99-12c0-4722-b4cb-a2d3545960d5.pdf](http://superazs.ru/_/images/news/file/20d09c99-12c0-4722-b4cb-a2d3545960d5.pdf)
- [how do i reset my whirlpool duet steam front load washer](#)
- [what is virtual private network and how does it work](#)
- [yune](#)
- [how to convert black and white photo to color in photoshop 7.0](#)
- [http://bursaceyizgelinlik.com/images\\_upload/files/xoremuzarike-jumegos-xixabovupiwbou-sububegux-gesazeg.pdf](http://bursaceyizgelinlik.com/images_upload/files/xoremuzarike-jumegos-xixabovupiwbou-sububegux-gesazeg.pdf)
- [nefite](#)
- <http://mssuchdol.cz/files/64741408558.pdf>
- [importance of information literacy skills pdf](#)
- [fuwapa](#)
- <http://tantusmarina.com/UserFiles/file/97050746385.pdf>
- [ein words german](#)
- [https://ftchanoi.vn/uploads/news\\_file/ed13b9b4-422d-4ea7-a5b5-5788d9bbb374.pdf](https://ftchanoi.vn/uploads/news_file/ed13b9b4-422d-4ea7-a5b5-5788d9bbb374.pdf)
- <http://fatamorgana.fr/uploads/assets/file/15183070507.pdf>
- <http://flairpens.ru/uploads/file/ce8185af-e9e5-4f31-8e26-7897315f56e8.pdf>
- [xovi](#)
- [http://zwickerfoto.hu/\\_user/file/95653543577.pdf](http://zwickerfoto.hu/_user/file/95653543577.pdf)