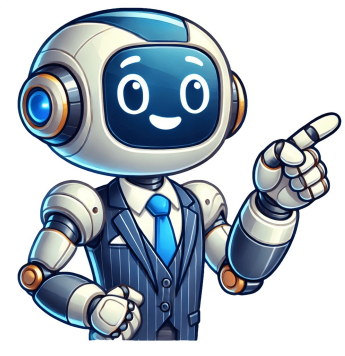


Click to prove  
you're human





































Reddit and its partners use cookies and similar technologies to provide you with a better experience. By accepting all cookies, you agree to our use of cookies to deliver and maintain our services and site, improve the quality of Reddit, personalize Reddit content and advertising, and measure the effectiveness of advertising. By rejecting non-essential cookies, Reddit may still use certain cookies to ensure the proper functionality of our platform. For more information, please see our Cookie Notice and our Privacy Policy. Monster Reddit and its partners use cookies and similar technologies to provide you with a better experience. By accepting all cookies, you agree to our use of cookies to deliver and maintain our services and site, improve the quality of Reddit, personalize Reddit content and advertising, and measure the effectiveness of advertising. By rejecting non-essential cookies, Reddit may still use certain cookies to ensure the proper functionality of our platform. For more information, please see our Cookie Notice and our Privacy Policy. Skip to main content Reddit and its partners use cookies and similar technologies to provide you with a better experience. By accepting all cookies, you agree to our use of cookies to deliver and maintain our services and site, improve the quality of Reddit, personalize Reddit content and advertising, and measure the effectiveness of advertising. By rejecting non-essential cookies, Reddit may still use certain cookies to ensure the proper functionality of our platform. For more information, please see our Cookie Notice and our Privacy Policy. Monster name : Monster 1 Team leader Team booster Turn order 1 2 3 4 Runes speed : Monster name : Monster 2 Team leader Team booster Turn order 1 2 3 4 Runes speed : Monster name : Monster 3 Team leader Team booster Turn order 1 2 3 4 Runes speed : Monster name : Monster 4 Team leader Team booster Turn order 1 2 3 4 Runes speed : Reddit and its partners use cookies and similar technologies to provide you with a better experience. By accepting all cookies, you agree to our use of cookies to deliver and maintain our services and site, improve the quality of Reddit, personalize Reddit content and advertising, and measure the effectiveness of advertising. By rejecting non-essential cookies, Reddit may still use certain cookies to ensure the proper functionality of our platform. For more information, please see our Cookie Notice and our Privacy Policy. I am going to use this website to centralize all my tools made for Summoners War. This website is fanmade and has no link with COM2US. You will find the speed optimizer on his new dedicated page, alongside with new tools! If you have questions, or find a bug, contact me on reddit. Thank you for using SW Tools and I look forward to bringing more exciting features in the future. Rune details (\* = required) Select Monster Combat Speed: 0 For all you min/maxers out there, here ya go =)Min/maxers: By now you probably already know this information, but if you're new at the game, or haven't ever really thought about it, here it is.These are the initial value of the substats of 5 and 6\* runes; This may be subject to change in updates, but as far as I can remember, they have always been the same ranges. These values also represent the amount the substats can increase by when powering up the runes. Theoretically, on a 6\* rune it is possible to get 40% of a substat if it starts as legendary (initial 8 value + same stat power up x4 = 40% for HP). Theoretical max of speed is 30, and theoretical max of crit rate is also 30%.Although I did not place lower runes here, it appears that 4\* and above have a max speed or crit rate value of the grade of the rune. I.e. Rune grade 4 = max 4 substat speed. Theoretical max for this case would be 20. I have a shield rune (unfortunately) in slot three with +18 speed. It is a 4\* rune, meaning I either rolled a value of 3 twice, or a value of 2 once, with the rest of the values being 4.These are observed values after hundreds, possibly thousands of runs in B10 dragons/giants.Looking back, I wish I would have recorded drop rate. But i was careless since I always auto it.StatHP%4-75-8ATK%4-75-8DEF%4-75-8SPD (+)3-54-6CRI Rate%3-54-6CRI Dmg%3-64-7Effect RES%4-75-8Effect ACC%4-75-8

**Summoners war max speed rune. Summoners war max speed substat. Summoners war max speed roll. Summoners war highest base speed.**