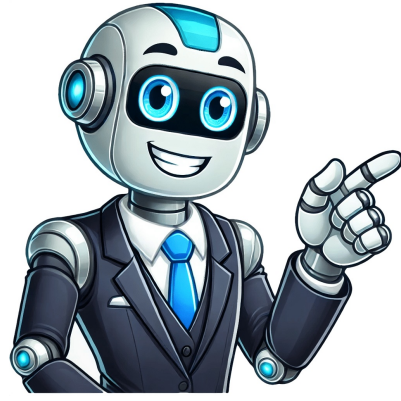


I'm not a bot

























## Practical vs practicable

Practicable emphasizes theoretical feasibility, whereas Practical focuses on real-world effectiveness. Practicable and Practical convey nuanced differences in meaning. Practicable refers to the potential of an idea or plan without considering its practicality or implementation ease. Practical considers both possibility and applicability. Practicable is about theoretical feasibility and capability. Practical applies to real-world conditions, emphasizing current usability and efficiency. Practicable often requires specific conditions or innovations. Practical prioritizes what's sensible and achievable in the present context. Practicable solutions may not always be immediately available. practically The term "practical" refers to something that is feasible, sensible, or useful in real-world situations. It describes approaches, methods, or ideas that can be implemented effectively with current resources, knowledge, and conditions, offering straightforward solutions. Practicality is concerned with the effectiveness of a solution in everyday life, emphasizing what can be accomplished with available means or resources. Practically refers to something that can theoretically be done or achieved under certain conditions, whereas practicality focuses on the possibility of implementation. The distinction between these two concepts helps in planning and decision-making, ensuring that solutions are not only theoretically possible but also realistically feasible and effective. In real-world scenarios, practicality is often more valued because it ensures immediate applicability and effectiveness. Businesses prefer practical solutions due to their ability to offer benefits such as efficiency, cost-effectiveness, and operational success. However, constraints like budget, time, and resources can limit both the practicability and practicality of a solution, requiring adjustments to align with current capabilities. The assessment of practicality is crucial in the innovation process, determining whether an idea can be theoretically implemented. This consideration influences everyday decision-making, prioritizing actions and choices that are sensible, effective, and feasible given current circumstances and resources. Effective public policy often requires balancing practicability with practicality, considering both legislative and regulatory feasibility as well as enforceability and public acceptance in the short term, while also evaluating the long-term potential for various options through research and development assessments. In strategic planning, identifying feasible goals and initiatives through practicability assessments helps organizations set realistic implementation strategies. While cost-effectiveness is a key consideration, practical solutions typically prioritize cost-benefit analysis to achieve goals within budget constraints. If something can be put into action, it's probably practicable. But is it realistic to finish a huge project in one day? Maybe not if it needs more time for good results. Notice how "practicable" leans towards possibility and feasibility? It's like asking, "Can we actually do this?" rather than "Is this an easy choice?" Confusing "Practical" with "Practicable". To distinguish between these words, think of tools and plans. Tool: If you're talking about a tool or method that helps you in your daily work or life, use "practical". Plan: If you're wondering if you can implement a plan or idea, maybe "practicable" is the word you need. Scenario: Imagine teaching your friend how to bake cookies. A practical approach would be using store-bought cookie dough, making it easier. But, if your oven isn't working, check if it's practicable to bake cookies at your friend's house instead. Using the Wrong Word. Don't mix up "practicable" with "practical". Using the wrong word can confuse the person you're talking to because it shifts focus from helpfulness to feasibility. They might think you're asking if something can be done, not if it's a good or easy choice. Double Check Your Word Choice. Whenever you're tempted to use "practicable", pause and think about what you really mean. If it's about whether something is possible or can be implemented, you're on the right track. If you're talking about making choices based on ease or function, stick with "practical". The Bottom Line. Both "practical" and "practicable" deal with realism, but they have different meanings. "Practical" is about being helpful or sensible, while "practicable" is about feasibility and implementation. Choose the right word to make your message clearer. Next time you're in a discussion or writing something important, think if you're talking about usefulness (practical) or doability (practicable). Pick the right word for clear ideas! Still unsure? Just ask! A quick question can save you from a big mix-up. And remember, practice makes perfect when it comes to choosing the right word. Often, practicable refers to the possibility of something being done without considering its practical consequences. It's about whether it can be achieved logistically. In contrast, practical is more concerned with the usefulness and effectiveness of an action or concept, often implying a hands-on approach. In usage, practicable might be used in planning phases to assess feasibility, while practical is more likely to be used when discussing execution, focusing on how something can be carried out efficiently. To summarize, practicable is about theoretical possibility, whereas practical is about real-world utility and application. Practicable means capable of being done or achieved, while practical refers to the actual use or application of something. Theoretical feasibility and possibility are different from real-world utility and application. Planning and strategy involve considering possibilities, whereas execution involves putting plans into action effectively. Examples include: "The plan is practicable given our resources" and "Her approach is very practical in solving daily problems." practical knowledge is useful for real-life situations; Modern engineering uses science to solve problems. The timeline for a project can be tight but still feasible. A prop is a part that functions rather than just being an imitation. Practical lighting helps sell the illusion of reality in film. Practical exams test a person's ability to apply their skills. A practical approach means applying knowledge to achieve real results; it involves experience and observation. A hard-nosed view can be useful but may not consider all factors. The furniture is not only stylish but also functional. Her advice was valuable during a crisis because it was relevant and applicable. A solution might be sensible, but it's not necessarily feasible under current conditions. Practice vs. Practise: A Guide to Understanding the Spelling Variations in American and British English. The -ise or -ize suffix in verbs like organize, civilize, realize is a peculiarity of American English, whereas the UK shows a split opinion, with some sources like the Oxford English Dictionary supporting -ize. Interestingly, examples of organized dates back to 1425. The choice between -ise and -ize often hinges on the word's linguistic roots, with Greek-derived words ending in -ize and those rooted in French or Latin using -ise. For instance, the difference between practice and practise stems from Old French pratiser and practicer. Want to explore more disparities between American and International English? Check out this article: A Glimpse Into The Differences Between US, UK, And Aussie English.