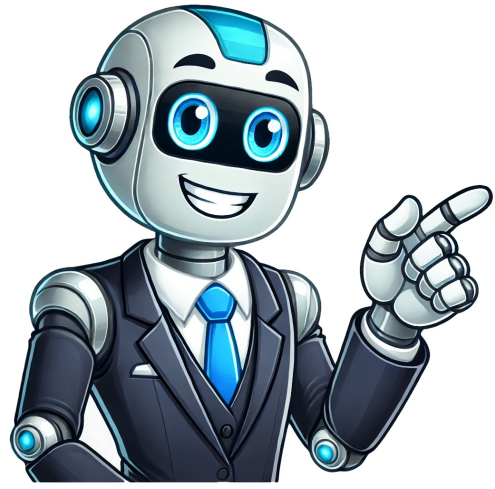


Continue



Map of yucaipa ca

Yucaipa, located in San Bernardino County, California, boasts a unique blend of natural beauty and small-town charm. With its picturesque landscapes and pleasant climate, Yucaipa attracts outdoor enthusiasts who can indulge in various activities such as hiking, fishing, and camping. The city's central recreational spot, the Yucaipa Regional Park, offers serene lakes perfect for picnics and miles of trails to explore. Nearby, the San Bernardino National Forest provides ample opportunities for adventure seekers. Visitors can also delve into the area's rich history by exploring the historic Yucaipa Adobe museum, which showcases artifacts and architecture from the 19th century. The Uptown Yucaipa district offers a glimpse into the city's vibrant local culture, complete with shops, eateries, and community events. With its combination of natural attractions and historical significance, Yucaipa is an attractive destination for travelers exploring Southern California. Yucaipa Hotels, Car Rentals and Flights Map ----- We have curated a list of top-rated hotels in Yucaipa, ensuring the highest guest satisfaction levels. Our comprehensive hotel map displays each location with a detailed zoom feature, allowing you to choose your ideal accommodation by area. Our map also features all Yucaipa hotels, marked for easy navigation. We offer a map search feature that can be easily integrated into your website. To use it, simply copy and paste the provided HTML code into your page source code. This will allow users to access a list of maps for Yucaipa, California, including Google satellite maps. Additionally, you'll find a search box that enables users to find specific maps by typing in a location or region. The search box must be used exactly as provided and not modified in any way. We've also included several interactive maps of Yucaipa, California, which provide detailed information about the region, including highways, road conditions, transportation options, and more. These maps are provided by Maplandia.com, an independent source that is not affiliated with Google. Los Angeles Map San Diego Map San Jose Map San Francisco Map Fresno Map Sacramento Map Long Beach Map Oakland Map Bakersfield Map Anaheim Map Santa Ana Map Riverside Map Stockton Map Chualar Map Fremont Map Irvine Map San Bernardino Map Modesto Map Oxnard Map Fontana Map Moreno Valley Map Glendale Map Huntington Beach Map Santa Clarita Map Garden Grove Map Santa Rosa Map Oceanside Map Rancho Cucamonga Map Ontario Map Lancaster Map Elk Grove Map Palmdale Map Corning Map Salinas Map Pomona Map Torrance Map Hayward Map Escondido Map Sunnyvale Map Pasadena Map Orange Map Fullerton Map Thousand Oaks Map East La Mirada Map Visalia Map Simi Valley Map Compton Map Roseville Map Santa Clara Map Vallejo Map Victorville Map El Granada Map Benton Map Douglas City Map Corte Madera Map Inglewood Map San Buenaventura (Ventura) Map West Covina Map Norwalk Map Caribou Map Fairfield Map Richmond Map Murrieta Map Buena Vista Map Antelope Map Cypress Map Temecula Map Santa Maria Map Edwards AFB Map Rialto Map San Mateo Map Comptche Map Cloverdale Map South Gate Map Vista Map Mission Viejo Map Vacaville Map Arcata Map Carrick Map Hesperia Map Redding Map Santa Monica Map Westminster Map Santa Barbara Map Chester Map Whittier Map Newport Beach Map San Leandro Map Hawthorne Map San Marcos Map Citrus Map Alhambra Map Tracy Map Livermore Map Buelton Map Lakewood Map Merced Map Hemet Map Chinese Camp Map Menifee Map Lake Forest Map Napa Map Redwood City Map Bella Vista Map Indio Map Tustin Map Baker Map Chino Map Mountain View Map Alameda Map Upland Map Folsom Map San Ramon Map Pleasanton Map Lynwood Map Union City Map Anza Map Redlands Map Turlock Map Perris Map Manteca Map Milpitas Map Redondo Beach Map Davenport Map Camanche Village Map Yuba City Map Rancho Cordova Map Palo Alto Map Yorba Linda Map Walnut Creek Map South San Francisco Map San Clemente Map Florence Graham Map Pittsburg Map Laguna Niguel Map Pico Rivera Map Montebello Map Lodi Map Carmet Map Madera Map Castle Hill Map Monterey Park Map La Habra Map Santa Cruz Map Encinitas Map Tulare Map Gardena Map National City Map Culver City Map Huntington Park Map Petaluma Map San Rafael Map South Whittier Map Perris Camp Map La Mesa Map Rocklin Map Arbuckle Map Diablo Grande Map Woodland Map Fountain Valley Map Porterville Map Paramount Map Hacienda Heights Map Hanford Map Rosemead Map Easton Map Santee Map Highland Map Del Rio Map Coloma Map Novato Map Lake Elsinore Map Brea Map Yucaipa Map The original numbering plan for California, established in 1947 by AT&T, divided the state into three areas: 213, 415, and 916. The 213 area code covered a vast region from the Mexican border to the Central Coast. However, due to rapid expansion in Southern California during the 1950s, area code 213 was split five times by 1998. In 1951, most of southern and eastern areas, including San Diego and Orange County, were assigned area code 714. On November 14, 1992, the numbering plan area 714 in southern California was divided into an additional numbering plan area with the area code 909. After a permissive dialing period, dialing the area code became mandatory in August 1993. Later, on August 26, 1999, the NANPA approved a request by the California Public Utilities Commission for a two-phase split/overlay plan to provide relief for 909. However, due to consumer complaints and the implementation of 1,000-block number pooling, both phases were cancelled before their execution. Nevertheless, in 2004, western Riverside County was finally split off from 909 and assigned area code 951, leaving some areas in Corona, Riverside, Moreno Valley, and Calimesa still under 909. The original plan also included a second phase to introduce an overlay NPA with the area code 752. However, this plan was indefinitely postponed and later permanently cancelled due to number rationing. The area code 909 has been overlaid with a new code, 840, which will become effective on February 23, 2021. This means that customers in areas previously covered by 909 can continue to use their existing phone numbers, while new customers will be assigned numbers from the 840 range. The change was approved by the California Public Utilities Commission and is intended to ensure that there are enough phone numbers available for future demand. Here's a breakdown of the changes: * The area code 752 has been returned to the numbering pool and will likely be reassigned at a later date. * On July 23, 2019, the commission approved an all-services overlay for area code 909 with the new area code 840. * A permissive dialing period was implemented from July 2020 to January 2021, during which customers were allowed to continue using their existing phone numbers or switch to the new 840 range. The text also mentions a list of cities and towns that are covered by the area codes 909 and 840, including Yucaipa, California. San Diego and surrounding cities in California