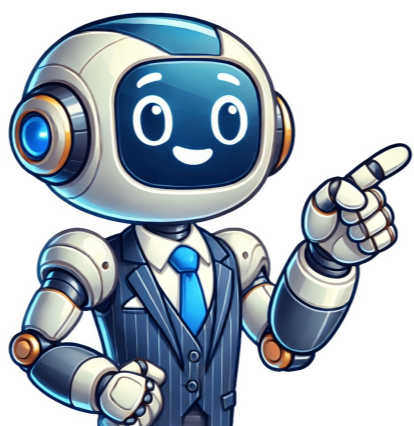


[Click Here](#)































Reddit and its partners use cookies and similar technologies to provide you with a better experience. By accepting all cookies, you agree to our use of cookies to deliver and maintain our services and site, improve the quality of Reddit, personalize Reddit content and advertising, and measure the effectiveness of advertising. By rejecting non-essential cookies, Reddit may still use certain cookies to ensure the proper functionality of our platform. For more information, please see our Cookie Notice and our Privacy Policy. Reddit and its partners use cookies and similar technologies to provide you with a better experience. By accepting all cookies, you agree to our use of cookies to deliver and maintain our services and site, improve the quality of Reddit, personalize Reddit content and advertising, and measure the effectiveness of advertising. By rejecting non-essential cookies, Reddit may still use certain cookies to ensure the proper functionality of our platform. For more information, please see our Cookie Notice and our Privacy Policy. The oak tree is quite a large tree, and its wood is very stong and durable. Let's see if the SAWMILL will do the trick. Buy Price Sell Price Unknown 110 Oak Log belongs to the Wood category of Items found in Spiritfarer. It can be collected by cutting down an Oak Tree found on an Island or on one of the Turtle sisters. It is mainly used to make Oak Planks at a Sawmill. How to Acquire[]Oak Logs are generally obtained by cutting down an Oak Tree on Islands or on one of the Turtle sisters, but can also be found in Crates.Cutting down an Oak Tree will yield 2-4 Oak Logs, or 8-9 Oak Logs with the Improved Tools Ability.Island Locations[] Crates in the Furogawa Region[]-56, 38[]-83, 48[]-84, 24[]Usage[]Can be turned into Oak Planks at a Sawmill.InputOutput (Improved Output)Oak Log1-4 (3-6) Oak Plank1 SawdustConstruction/Improvement at Blueprint Station[]Construction/ImprovementCostSummer's Sanctuary ImprovementMonstera Deliciosa3 Oak Log2 Leek200 Glim Spiritfarer: Farewell Edition > General Discussions > Topic Details Woodcutting is the worst mini-game. When it comes to cutting oak I just move the saw to where it will catch the tops of two hills. If I actually try to move the saw up and down I'll pretty often miss entirely (just hitting the line ever-so-briefly a couple times). If there's just one hill I actually TRY to get the second hill. I've tried this on my Deck's analog stick, I've tried it on the D-pad. It's no easier either way.Does upgrading the thing make it easier, harder (but with more options?) or no difference? Note: This is ONLY to be used to report spam, advertising, and problematic (harassment, fighting, or rude) posts. During your journey as the Spiritfarer, you will get requests for a lot of upgrades and creations on your boat. It will be your mission to gather the materials needed for that and fulfill those requests. During one such request, you will have to gather some Oak Planks. But how to Get Oak Planks in Spiritfarer? Are they readily available or do you have to make them? Know all about it in this quick guide.Spiritfarer Oak Plank: How to Get itThe first thing you need to craft Oak Plank is an Oak Log. By using the Oak Log in the Sawmill, you can easily create Oak Plank for your other quests. Of course, the Sawmill needs to be already constructed on your boat for this to work. Once you have done that, Atul will teach you how to use it to make planks. Now, where to find Oak logs that you need? Head over to an island named Gurenu Fields (X = -65, Y = 55) from your boat. When you get down on this island, you will see Oak trees that you can cut. Oak logs from these trees are exactly what you want and that will help you make Oak Plank in Spiritfarer. With that in hand, you will be able to construct buildings and more.Thats pretty much how to create Oak Planks but theres more such info in our Spiritfarer guides. Dont miss our important tips to gather resources that will make your adventure a smooth sailing one. Read about how to get Linen Fabric easily, how to get Glass, lightning in a bottle, fat (oils),and meditation ability (time skip). Truth be told, we are absolutely enjoying this slow and relaxing game based on such a unique theme. Its emotional aspect is gently woven with the crafting, building, harvesting, cooking, fishing and other activities, making it one of our choices of the best game of the year. Note: This is ONLY to be used to report spam, advertising, and prolematic (harassment, fighting, or rude) posts, Note: This is ONLY to be used to report spam, advertising, and problematic (harassment, fighting, or rude) posts. Oak logs are categorized as wood in Spiritfarer. You can acquire this material by cutting down oak trees from certain islands or from any of the Turtle Sisters. The logs are then turned into planks using the sawmill, and can be used in 3 buildings and 6 improvements.Where To Find Oak LogsCutting down trees to get logs.Oak logs are acquired by cutting oak trees. To do this, approach any oak tree and click the interact button, turning the everlight into a saw. Then saw left to right repeatedly until the tree gets cut down. These trees usually grow back within a few in-game days. You can find oak trees in these locations:Gurenu FieldsThis is an early-game island that can be reached without any prior ship upgrade. You can find this island at X: -65, Y: 55, on the World Maps west side.The oak trees on Gurenu Fields are found inside the forest.Once on the island, walk to your right until you reach a dark forest. Inside, you'll find 2 oak trees standing close to each other.Iwashima CountrysideFrom Gurenu Fields, head south to find Iwashima Countryside, at X: -64, Y: 16. This is a beginner island that doesnt need ship improvements.Oak Tree #1First tree on Iwashima Countryside is right by the docks.From the islands starting point, walk to your right and you'll immediately find the first tree.Oak Tree #2The 2nd tree beside the bridge.Keep walking to your right until you pass by the bridge and find the next oak tree.Oak Tree #3The last tree is inside the forest located at the other end of the island.Walk to the far-right of the island and you'll find a dark forest with one oak tree inside.Resuteno MeadowsThis island is located far down south, at X: -97, Y: -25. As with the previous islands, this can be reached without any ship improvements.Oak Tree #1Walk right into the meadow until you find the first tree.The first oak tree on this island can be found by walking to the right and passing by the grassy meadow.Oak Tree #2Pass by the sacred rock and the grassy meadow to find the 2nd tree.From the first tree, keep walking to your right until you pass by the sacred rock with spirits. Eventually you'll come across another oak tree.Turtle SistersPlanting an oak tree on one of the Turtle Sisters.Once any of the Turtle Sisters have been unlocked, you can also plant oak trees at any of the plots on their backs. These trees will then grow after a few in-game days, and you can cut them to improve your oak log supply. The turtle sisters are located at:Olga (X: 81, Y: 28)Masha (X: -91, Y: 138)Irina (X: 127, Y: -76)Floating CratesFloating Crates in the Furogawa Region also contain oak logs.Aside from cutting down trees, you can also find oak logs from the floating crates that you can find in these specific coordinates:X: -56, Y: 38X: -83, Y: 48X: -84, Y: 24Note: All of these areas can be found in the games Furogawa Region.How To Make Oak PlanksInput oak logs inside the sawmill to make oak planks.After getting oak logs, go to the sawmill and put in your oak logs (you can input up to 50). Then simply trace the yellow line on the wood as it passes by the indicator. You can get more planks the better you trace. A maximum of 4 planks can be made per oak log, plus 1 sawdust. Once you improve the sawmill, you will increase the amount of maximum planks up to 6.UsageThese are all of the uses for both oak logs and oak trees:ImprovementMaterialsSummers Sanctuary Improvement (Monstera Deliciosa)3 Oak Logs2 Leeks200 GlimsBuilding/ImprovementMaterialsSummers Sanctuary12 Oak Planks8 LimestonesSummers Sanctuary Improvement (Crystal Table)5 Oak Planks3 Limestones180 GlimsOrchard8 Oak Planks4 Nebula ThreadsOrchard Improvement13 Oak Planks2 FireglowsWindmill16 Oak Planks8 Marbles5 Aluminum IngotsAtuls Workshop Improvement (Desk)8 Oak Planks5 Aluminum Ingots12 Linen FabricsIcebreaker Boat Improvement12 Oak Planks18 Linen Fabrics10 Iron Ingots1 Spirit Flower5 Slates800 GlimsHermes Hymn Boat Improvement18 Oak Planks5 Slates16 Wool Fabrics1,250 Glims

How to get oak spiritfarer. Spiritfarer where to find oak wood.