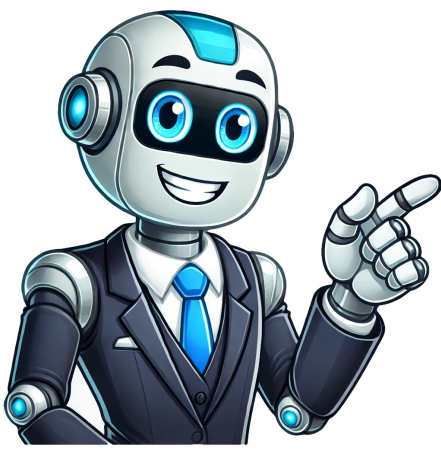


Click Here



Why are there 52 weeks in a year and not 48 weeks given that there are only 4 weeks per month (4 x 12 = 48)? A year is 365 days long, but because a solar year (the time it takes for the Earth to orbit the sun) is slightly longer than 365 days, an extra day is added to the calendar every four years to account for this discrepancy. This extra day is added to February, making it 29 days long in a leap year. This system of 365 days per year results in 52 weeks per year, not 48. A year is traditionally defined as the time it takes for the Earth to orbit the sun, which is approximately 365.24 days. However, the calendar year is only 365 days, with an extra day added every four years to account for the slight discrepancy between the solar year and the calendar year. This extra day is added to February, making it 29 days long during a leap year. This system of 365 days and leap years is known as the Gregorian calendar, which was introduced in 1582 and is currently used worldwide. The reason why there are 52 weeks in a year and not 48 is that 52 weeks is the closest approximation to 365 days that can be achieved with a consistent number of days per week. If we were to have 48 weeks per year, each week would have to be 7.29 days long to equal 365 days. This would create confusion and make it difficult to coordinate work schedules and appointments. Having 52 weeks per year also allows for clear and consistent scheduling of events and activities. For example, the 52-week year is used in business and financial planning, and it allows for easy tracking of weekly and annual performance. It also makes it easier to compare and analyze data on a weekly or yearly basis. Additionally, having 52 weeks per year also allows for a consistent and easily understood system of time measurement. It is easy to remember that there are 52 weeks in a year, and it provides a clear and simple way to divide the year into smaller units of time. This is particularly useful for scheduling appointments, meetings, and other events, as well as for tracking progress and progress. This system of 52 weeks per year is consistent and easy to understand, which makes it useful for scheduling and tracking purposes. It also allows for a consistent and easily understood system of time measurement. Year Number of Weeks Non-Leap Year 52 Leap Year 53 How Many Weeks in a Year However, the calendar year we use is 365 days, with an extra day added every four years to account for the slight discrepancy between the solar year and the calendar year. This system of 365 days and leap years is known as the Gregorian calendar, which was introduced in 1582 and is currently used worldwide. The number of weeks in a year is determined by dividing the number of days in a year by the number of days in a week. Since there are 365 days in a year and 52 weeks in a year, each week would have 7 days. However, during a leap year, there are 366 days. To account for this, one day is added to the end of February, making it 29 days long. This results in 52 weeks and 1 or 2 days in a leap year, depending on the year. Having 52 weeks in a year is a convenient and practical way to divide the year into smaller, manageable units of time. It allows for easy tracking of weekly and annual performance in business and financial planning. It also allows for a consistent and easily understood system of time measurement. It is easy to remember that there are 52 weeks in a year, and it provides a clear and simple way to divide the year into smaller units of time. Furthermore, 52 weeks per year also allows for clear and consistent scheduling of events and activities. It makes it easier to compare and analyze data on a weekly or annual basis. This is particularly useful for scheduling appointments, meetings, and other events, as well as for tracking progress and progress. 52 Weeks in Months and Days 52 Weeks is equal to 12 months and 4 days. This is because there are 52 weeks in a year, and 52 divided by 4 is 13, which means that there are 13 sets of 4 weeks in a year. Therefore, 4 weeks are left over and are not included in any of the 12 months. These 4 days are sometimes referred to as the "leap days" of the year. It's important to note that while 52 weeks is equal to 12 months and 4 days, this is not always the case for all years. For example, a leap year, which occurs every four years, has 52 weeks and 1 day. This extra day is added to the calendar in February as February 29th. This is done to keep the calendar year in sync with the solar year, or the length of time it takes for the Earth to orbit the sun. 52 weeks is equal to 12 months and 4 days, but this is not always the case for all years, a leap year has 52 weeks and 1 day, and this extra day is added to the calendar in February as February 29th to keep the calendar year in sync with the solar year. It's important to remember that the number of weeks in a year can change depending on whether or not the year is a leap year. You can calculate the number of weeks in a year with a calculator and others like a day calculator or dates calculator. In a common year, everyone knows that there are 365 days in a year, equal to 52 weeks and 1 day. In a leap year, there are 366 days in a year, equal to 52 weeks and 2 days. Year from 2010 to 2028 Years (leap or common) Weeks (1 Year) 2010 Common 52 weeks and 1 day 2011 Common 52 weeks and 1 day 2012 Leap 52 weeks and 2 days 2013 Common 52 weeks and 1 day 2014 Common 52 weeks and 1 day 2015 Common 52 weeks and 1 day 2016 Leap 52 weeks and 2 days 2017 Common 52 weeks and 1 day 2018 Common 52 weeks and 1 day 2019 Common 52 weeks and 1 day 2020 Leap 52 weeks and 2 days 2021 Common 52 weeks and 1 day 2022 Common 52 weeks and 1 day 2023 Common 52 weeks and 1 day 2024 Leap 52 weeks and 2 days 2025 Common 52 weeks and 1 day 2026 Common 52 weeks and 1 day 2027 Common 52 weeks and 1 day 2028 Leap 52 weeks and 2 days Why are 52 14 Weeks in a Year To account for the extra .24 days, an additional day is added to the calendar every four years as February 29th, known as a leap year. This is why a leap year has 52 weeks and 1 day, while a non-leap year has 52 weeks and 0 days. The reason why there are 52 weeks in a year is that it is a convenient way to divide up the year into manageable chunks of time. 52 weeks is also easy to remember and allows for easy planning and scheduling. For example, a person can plan their work or school schedule every week, or set goals and track progress every week. Additionally, having 52 weeks in a year is also convenient for businesses and organizations that operate on a weekly schedule, such as retailers and news organizations. There are 52 weeks in a year because it is a convenient way to divide up the year into manageable chunks of time, and it allows for easy planning and scheduling. The number of weeks in a year can change depending on whether or not the year is a leap year, but it is mostly 52 weeks, this is also convenient for businesses and organizations that operate on a weekly schedule. Can there be 48 weeks in a year? The number of weeks in a year is typically 52, except leap years which have 53. However, it is possible to divide the year into 48 weeks instead of 52. This is done by slightly altering the length of each month, so that the year has 48 groups of four weeks each, instead of 52 groups of four weeks. This would mean that each month would be slightly longer or shorter than it is in the traditional calendar. One way to achieve 48 weeks in a year would be to have each month be exactly 4 weeks long. This would mean that the year would be 48 months x 4 weeks = 192 weeks long. However, this would mean that the months would not match up with the natural cycles of the Earth's orbit around the sun, and would not align with the traditional holidays and seasons. Another way to achieve 48 weeks in a year would be to have each month be 4 weeks and 1 day long. This would mean that the year would be 48 months x 4 weeks + 1 day = 193 weeks long. However, this would mean that the months would not match up with the natural cycles of the Earth's orbit around the sun, and would not align with the traditional holidays and seasons. It is possible to divide the year into 48 weeks instead of 52, but it would require altering the length of each month, which would result in the year not aligning with the natural cycles of the Earth's orbit around the sun and not aligning with the traditional holidays and seasons. It is important to note that the traditional calendar is widely used and accepted and any changes to the number of weeks in a year would be difficult to implement and would take considerable time to be adopted by society. There are 52.286 weeks a year, equal to 52 weeks with 1 day. The total days in a year are 365 days. There are 7 days per week, and according to the common calendar, we know there are 52 weeks in a year. Frequently Asked Questions Some Important Questions For Your Knowledge: 1. Why are there 52 weeks in a year and not 48 weeks? The number of weeks in a year is typically 52, except leap years which have 53. This is because 52 weeks is a convenient way to divide up the year into manageable chunks of time, and it allows for easy planning and scheduling. Additionally, the calendar year is divided into 12 months with 365 days and an extra day is added to the calendar every four years as February 29th, to align it with the Earth's orbit around the sun. 2. Does the number of weeks in a year change depend on the year? Yes, the number of weeks in a year can change depending on whether or not the year is a leap year. A leap year has 53 weeks, while a non-leap year has 52 weeks. 3. How does the Earth's orbit around the sun affect the number of weeks in a year? A year is typically defined as the amount of time it takes for the Earth to orbit the sun, which is approximately 365.24 days. However, the calendar year, which is used for most everyday purposes, is divided into 12 months with 365 days. To account for the extra .24 days, an additional day is added to the calendar every four years as February 29th, known as a leap year. 4. What is the main reason for having 52 weeks in a year? The main reason for having 52 weeks in a year is that it is a convenient way to divide up the year into manageable chunks of time and it allows for easy planning and scheduling. 5. Can the year be divided into 48 weeks instead? It is possible to divide the year into 48 weeks instead of 52 by altering the length of each month, however, this would result in the year not aligning with the natural cycles of the Earth's orbit around the sun and not aligning with the traditional holidays and seasons. 6. How does having 48 weeks in a year affect the length of each month? Having 48 weeks in a year would require each month to be slightly longer or shorter than it is in the traditional calendar, to have 48 groups of four weeks each, instead of 52 groups of four weeks. 7. What are the challenges of having 48 weeks in a year? One of the main challenges of having 48 weeks in a year is that it would not align with the natural cycles of the Earth's orbit around the sun and not align with the traditional holidays and seasons. Additionally, it would be difficult to implement and would take considerable time to be adopted by society. 8. What is a leap year? A leap year is a year that has an extra day, February 29th, which is added to the calendar to keep it in sync with the solar year. 9. How many weeks are in a non-leap year? A non-leap year has 52 weeks. 10. How many weeks are in a leap year? A leap year has 53 weeks. In conclusion, there are 52 weeks in a year because it is a convenient way to divide up the year into manageable chunks of time, and it allows for easy planning and scheduling. The traditional calendar is widely used and accepted, and any changes to the number of weeks in a year would be difficult to implement and would take considerable time to be adopted by society. Related Articles Menu Select your units, enter your value and quickly get your result. Easy as that. Select your units, enter your value and quickly get your result. Easy as that. Popular Conversions Unit Categories Recent Searches 3,514 m to Kilometers (km) 24,285 M to Gigabytes (GB) 1,052 gal/min to Cubic feet per second (ft³/s) 5,000 tsk to Litres (l) 15,065 kg to Tons (t) 1,190 g to Kilograms (kg) 6,172.292 m2 to Square Kilometers (km2) 7,022.175 km2 to Square Miles (mi2) 51itemap Privacy Directory One Gregorian calendar year has approximately 52 weeks. Weeks in a common Year One Gregorian calendar common year has 365 days 1 common year =365 days =(365 days) / (7 days/week) =52.142857 weeks =52 weeks + 1 day Weeks in a leap Year One Gregorian calendar leap year occurs every 4 years that are not divisible by 100 and not divisible by 400. One Gregorian calendar leap year has 366 days, when February has 29 days: 1 leap year =366 days =(366 days) / (7 days/week) =52.285714 weeks =52 weeks + 2 days Weeks in a year chart Each column in the chart is 1 week and each row in the chart is a day in a week (e.g first row from the top is Sundays). Each day shows toltip of the date and week number: Weeks in a year table by year Year LeapYear Weeks ina Year 2013 no 52weeks + 1day 2014 no 52weeks + 1day 2015 yes 52weeks + 2days 2016 no 52weeks + 1day 2017 no 52weeks + 1day 2018 no 52weeks + 1day 2019 no 52weeks + 1day 2020 yes 52weeks + 2days 2021 no 52weeks + 1day 2022 no 52weeks + 1day 2023 no 52weeks + 1day 2024 yes 52weeks + 2days 2025 no 52weeks + 1day 2026 no 52weeks + 1day 2027 no 52weeks + 1day 2028 yes 52weeks + 2days 2029 no 52weeks + 1day How many weeks in a month There are 4 weeks to 4 weeks+3 days in a month (See: Weeks in a month). See also It is not possible to list either all composite or all prime numbers as there are an infinite amount of both. See the related question for a list of primes. Any number over one that's not on the lists linked below are composites 4, 6, 8, 9, 10, 12, 14, 15, 16, 18, 20, 21, 22, 24, 25, 26, 27, 28, 30, 32, 33, 34, 35, 36, 38, 39, 40, 42, 44, 45, 46, 48, 49, 50, 51, 52, 54, 55, 56, 57, 58, 60, 62, 63, 64, 65, 66, 68, 69, 70, 72, 74, 75, 76, 77, 78, 80, 81, 82, 84, 85, 86, 87, 88, 90, 91, 92, 93, 94, 95, 96, 98, 99, 100, 102, 104, 105, 106, 108, 110, 111, 112, 114, 115, 116, 117, 118, 119, 120, 121, 122, 123, 124, 125, 126, 128, 129, 130, 132, 133, 134, 135, 136, 138, 140, 141, 142, 143, 144, 145, 146, 147, 148, 150, 152, 153, 154, 155, 156, 158, 159, 160, 161, 162, 164, 165, 166, 168, 169, 170, 171, 172, 174, 175, 176, 177, 178, 180, 182, 183, 184, 185, 186, 187, 188, 189, 190, 192, 194, 195, 196, 198, 200, 201, 202, 203, 204, 205, 206, 207, 208, 209, 210, 212, 213, 214, 215, 216, 217, 218, 219, 220, 221, 222, 224, 225, 226, 228, 229, 230, 231, 232, 234, 235, 236, 237, 238, 240, 242, 243, 244, 245, 246, 247, 248, 250, 252, 253, 254, 255, 256, 258, 259, 260, 261, 262, 264, 265, 266, 267, 268, 270, 272, 273, 274, 275, 276, 278, 279, 280, 282, 284, 285, 286, 287, 288, 289, 290, 291, 292, 294, 295, 296, 297, 298, 299, 300, 301, 302, 303, 304, 305, 306, 308, 309, 310, 312, 314, 315, 316, 318, 319, 320, 321, 322, 323, 324, 325, 326, 327, 328, 329, 330, 332, 333, 334, 335, 336, 338, 339, 340, 341, 342, 343, 344, 345, 346, 348, 350, 351, 352, 354, 355, 356, 357, 358, 360, 361, 362, 363, 364, 365, 366, 368, 369, 370, 371, 372, 374, 375, 376, 377, 378, 380, 381, 382, 384, 385, 386, 387, 388, 390, 391, 392, 393, 394, 395, 396, 398, 399, 400, 402, 403, 404, 405, 406, 407, 408, 410, 411, 412, 413, 414, 415, 416, 417, 418, 420, 422, 423, 424, 425, 426, 427, 428, 429, 430, 432, 434, 435, 436, 437, 438, 440, 441, 442, 444, 445, 446, 447, 448, 450, 451, 452, 453, 454, 455, 456, 458, 459, 460, 462, 464, 465, 466, 468, 469, 470, 471, 472, 473, 474, 475, 476, 477, 478, 480, 481, 482, 483, 484, 485, 486, 488, 489, 490, 492, 493, 494, 495, 496, 497, 498, 500, 501, 502, 504, 505, 506, 507, 508, 510, 511, 512, 513, 514, 515, 516, 517, 518, 519, 520, 522, 524, 525, 526, 527, 528, 529, 530, 531, 532, 533, 534, 535, 536, 537, 538, 539, 540, 542, 543, 544, 545, 546, 548, 549, 550, 551, 552, 553, 554, 555, 556, 558, 559, 560, 561, 562, 564, 565, 566, 567, 568, 570, 572, 573, 574, 575, 576, 578, 579, 580, 581, 582, 583, 584, 585, 586, 588, 589, 590, 591, 592, 594, 595, 596, 597, 598, 600, 602, 603, 604, 605, 606, 608, 609, 610, 611, 612, 614, 615, 616, 618, 620, 621, 622, 623, 624, 625, 626, 627, 628, 629, 630, 632, 633, 634, 635, 636, 637, 638, 639, 640, 642, 644, 645, 646, 648, 649, 650, 651, 652, 654, 655, 656, 657, 658, 660, 662, 663, 664, 665, 666, 667, 668, 669, 670, 671, 672, 674, 675, 676, 678, 679, 680, 681, 682, 684, 685, 686, 687, 688, 689, 690, 692, 693, 694, 695, 696, 697, 698, 699, 700, 702, 703, 704, 705, 706, 707, 708, 710, 711, 712, 713, 714, 715, 716, 717, 718, 720, 721, 722, 723, 724, 725, 726, 728, 729, 730, 731, 732, 734, 735, 736, 737, 738, 740, 741, 742, 744, 745, 746, 747, 748, 749, 750, 752, 753, 754, 755, 756, 758, 759, 760, 762, 763, 764, 765, 766, 767, 768, 770, 771, 772, 774, 775, 776, 777, 778, 779, 780, 781, 782, 783, 784, 785, 786, 788, 789, 790, 791, 792, 793, 794, 795, 796, 798, 799, 800, 801, 802, 803, 804, 805, 806, 807, 808, 810, 812, 813, 814, 815, 816, 817, 818, 819, 820, 822, 824, 825, 826, 828, 830, 831, 832, 833, 834, 835, 836, 837, 838, 840, 841, 842, 843, 844, 845, 846, 847, 848, 849, 850, 851, 852, 854, 855, 856, 858, 860, 861, 862, 864, 865, 866, 867, 868, 869, 870, 871, 872, 873, 874, 875, 876, 878, 879, 880, 882, 884, 885, 886, 888, 889, 890, 891, 892, 893, 894, 895, 896, 897, 898, 899, 900, 901, 902, 903, 904, 905, 906, 908, 909, 910, 912, 913, 914, 915, 916, 917, 918, 920, 921, 922, 923, 924, 925, 926, 927, 928, 930, 931, 932, 933, 934, 935, 936, 938, 939, 940, 942, 943, 944, 945, 946, 948, 949, 950, 951, 952, 954, 955, 956, 957, 958, 959, 960, 961, 962, 963, 964, 965, 966, 968, 969, 970, 972, 973, 974, 975, 976, 978, 979, 980, 981, 982, 984, 985, 986, 987, 988, 989, 990, 992, 993, 994, 995, 996, 998, 999 and 1000 are composite. By Becky Kleantsohus! Last update: 06 October 2022One year has approximately 52 weeks. A normal year in the 'modern' calendar has 365 days, when divided by 7 (Monday, Tuesday, Wednesday, Thursday, Friday, Saturday, Sunday) equals 52.1428571 weeks. Every four years, there is a leap year", adding an extra day into the calendar (pity those 17-year-olds born on February 29th 2000, who have only had 4 true birthdays). In this case, the calculation is 366 divided by 7, which equals 52.2857, so it's still just 52 weeks. This is all based upon the Gregorian calendar (introduced back in 1582), which cycles every 400 years. If you want to go a step further and work out the average number of weeks in a year across the full Gregorian calendar, you'll find that a year works out at 365.2425 days. When divided by 7 it gives you a total of 52.1775 weeks.Summary of yearsHere's a table to show you how common years from the Gregorian calendar are broken down into weeks and days:Weeks in a year tableThe exception to the "52 weeks" rule pops up if you're using a fancy academic journal or office wall planner; sometimes they number the weeks based on them running from Sunday to Saturday, or Monday to Sunday, breaking up the first and last weeks of the year to fit this mould. Although there are still only 52 weeks in the year, and time doesn't magically slow down**, the way a calendar like that counts fragments at the start and end of the year might mean that the weeks are numbered as high as 54. E.g..WEEK 1: Thursday 1 January, Friday 2 January, Saturday 3 January, Sunday 4 JanuaryWEEK 2: Monday 5 January, Tuesday 6 January...*"An extra note about leap years...Leap years exist to correct a small margin of error in our annual calendars. A complete orbit of the sun actually takes Earth 365 days and 5 hours, 48 minutes. To compensate for the extra time, every 4 years we add an extra day to the calendar to maintain accuracy (otherwise we would be out by 24 more days every century).There are 3 criteria to determine a leap year. Julius Caesar introduced the idea 2000 years ago, defining any year which could be cleanly divided by 4 as a leap year. However, this made too many leap years and would still create an imbalance of time, so there is a checklist of 3 features any leap year should have...Leap year checklistThe number of the year can be divided by 4If the year can be divided by 100, then it's NOT a leap year, except...If it can also be divided by 400, in which case, OK, it's a leap year.*"Talking of time travel...In 1752, Europe was using the more accurate Gregorian calendar, which we still use today, but Britain was dragging its heels with the Julian calendar. The big switch happened in September that year, but to catch up with everyone else and to correct the accrued inaccuracy of the Julian calendar, English folk went to bed on Wednesday 2nd September 1752, and woke up on Thursday 14th September 1752. Some sources claim that members of the public rioted, outraged that their lives had been 'shortened' by 11 days! If you want to know how many days have passed since that big switch, by the way, give our days between dates calculator a try.How many days since...?Years go by so quickly, have you ever stopped to wonder just how many days you've been alive for? If so, you'll be delighted to hear about our funky age calculator tool. Give it a try!Like this? Please share!Your commentsAn online date units converter is a handy tool that helps you quickly and accurately convert time durations from one unit to another. Whether you need to convert seconds, minutes, hours, days, weeks, months, or years, this tool simplifies the process. With this converter, you can easily and quickly convert time periods to a different unit of measurement. For example, it can help you find out what is 52 Weeks in Years? (The answer is: 1).To use the online date units converter, simply select the unit you want to convert from (e.g., 'Years'), enter the quantity you want to convert (e.g., '52'), and choose the target unit you want to convert to (e.g., 'Weeks'). Then hit the 'Convert' button to get the results.For example, if you want to know What is 52 Weeks in Years, simply select 'Years' as the starting unit, enter '52' as the quantity, and select 'Weeks' as the target unit. The converter will then display the converted result, which in this case would be 1.This converter can help you with a wide range of time-related calculations, such as calculating the number of seconds in a given number of minutes or the number of days in a particular number of months. It is a practical tool for anyone who needs to work with time durations in different units and wants to save time and avoid errors in their calculations.Whether you're a student, a researcher, a programmer, or simply someone who wants to know how long it will take to complete a particular task, this online date units converter is a quick and easy way to get the answers you need. Unit ConverterTo convert 52 Weeks to Years you have to multiply 52 by 0.01916534904892, since 1 Week is 0.01916534904892 Years. The result is the following: 52 wk x 0.01916534904892 = 0.997 yr 52 wk = 0.997 yr We conclude that fifty-two 52 Weeks is equivalent to zero point nine nine seven Years: 52 Weeks is equal to 0.997 Years. Therefore, if you want to calculate how many Years are in 52 Weeks you can do so by using the conversion formula above. Below is the conversion table you can use to convert Weeks into YearsLet's see how both units in this conversion are defined, in this case Weeks and Years: Week (wk) (symbol: wk) is a time unit equal to seven days. It is the standard time period used for cycles of rest days in most parts of the world, mostly alongside--although not strictly part of--the Gregorian calendar. The days of the week were named after the classical planets (derived from the astrological system of planetary hrs) in the Roman era. In English, the names are Monday, Tuesday, Wednesday, Thursday, Friday, Saturday and Sunday. Year (yr) A year (symbol: yr; also abbreviated y; is the orbital period of the Earth moving in its orbit around the Sun. Due to the Earth's axial tilt, the course of a year sees the passing of the seasons, marked by changes in weather, the hours of daylight, and, consequently, vegetation and soil fertility. In temperate and subpolar regions around the globe, four seasons are generally recognized: spring, summer, autumn and winter. In tropical and subtropical regions several geographical sectors do not present defined seasons; but in the seasonal tropics, the annual wet and dry seasons are recognized and tracked. A calendar year is an approximation of the number of days of the Earth's orbital period as counted in a given calendar. The Gregorian, or modern, calendar, presents its calendar year to be either a common year of 365 days or a leap year of 366 days. Source: Wikipedia Topic: year Every year has 52 weeks. The year 2025 also has 52 weeks. At least mathematically, because while in purely mathematical terms every year consists of 52 weeks and 1 or 2 days, there are also 53 and 54 weeks per year in the case of numbered calendar weeks. We'd like to demonstrate how this works in the following section: A year has about 52 weeks. A normal (non-leap) year has 365 days. A week has 7 days. Thus, a year consists of 52 weeks and one day, because 52 times 7 is 364 days, and the one extra day is 365 days, i.e., one year. Or, to put it another way, 365 days divided by 7 equals 52.14, or 52 weeks and one day. A leap year also has 52 weeks. A leap year occurs every four years and has 366 days. That's 52 times 7 days, so 52 weeks and another 2 days. 365 / 7 = 52 Remainder 1 A year has 52 weeks and one day. 366 / 7 = 52 Remainder 2 A leap year has 52 weeks and two days. This is the purely mathematical method of determining the weeks of a year by dividing the days of a year by the 7 days of the week. However, there are also definitions according to which the weeks of a year are numbered as calendar weeks from the first to the last week. This is widely used, especially in business. With the different methods of numbering, there can also be 53 or even 54 weeks per year. How many weeks, according to ISO, does a year have? Each year has either 52 53 calendar weeks, according to the ISO standard. This depends on which day of the week the year begins. The international ISO definition of a week is predominantly used in European and Asian countries to number weeks. The definition states that a week always starts on a Monday, and the first week of the year always includes the first Thursday of the year. When does a year have 52 weeks according to ISO? Normally, a year has 52 ISO calendar weeks, as the following example illustrates. There, January 1 is a Tuesday, so only one day of the first week is in the old year. Thus this is the first calendar week. This is followed by 51 weeks, i.e., 51 times 7 equals 357 days. The week that follows still begins in the current year, but has more days in the following year. Therefore, this week already forms the first calendar week of the following year. This example year therefore has 52 calendar weeks. Example for 52 ISO weeks at 365 days Mo Tu We Th Fr Sa Su CW 1 01/01 02/01 03/01 04/01 05/01 06/01 CW 2 to CW 5251 times 7 equals 357 CW 1 of the New Year 29/12 31/12 When does a year have 53 weeks, according to the ISO standard? If a year (not a leap year) begins with a Thursday, it has 53 calendar weeks. First, three days of the first calendar week (Monday 29/12, Tuesday 30/12 and Wednesday 31/12) are carried over from the previous year. Likewise, three days of the last calendar week (Thursday 28/12, Friday 29/12 and Saturday 30/12) are carried over from the previous year. This is because a 365-day year that begins on a Thursday also ends on a Thursday. Thus, Friday, January 1, to Sunday, January 3, are also in the last calendar week. This total of 6 days plus the 365 days gives 371 days. Divided by 7, this gives exactly 53 calendar weeks. Example for 53 ISO weeks at 366 days Mo Tu We Th Fr Sa Su CW 1 01/01 02/01 03/01 04/01 05/01 06/01 CW 2 to CW 5251 times 7 equals 357 CW 1 of the New Year 29/12 31/12 A leap year with 366 days has 53 calendar weeks if it begins on a Wednesday and ends on a Thursday, or if it begins on a Thursday and ends on a Friday. How many North American weeks are there in a year? Each year has either 53 or 54 North American calendar weeks. This again depends on which day of the week the year begins. In the USA, Canada, almost all of South America, Australia, as well as Japan, Israel, South Korea, etc., a different system for numbering weeks is used compared to the ISO standard. Here, Sunday is the last day of the week, and Saturday is the last day of the week. In addition, the first calendar week always begins on January 1, regardless of the day of the week. Thus, the first and the last week of a year are usually not 7 days long. This is because the first calendar week starts -- regardless of the day of the week -- on January 1 and ends on the following Saturday, and the last calendar week always starts on the last Sunday of the year and ends on December 31. Is there also a year with 52 weeks according to the North American definition? No. Even if, for example, the first week of the year begins on a Sunday (1 January), and consists of a full 7 days, a year has at least 365 divided by 7 = 52 weeks and one day. This one day is then the Sunday on 12/31 of that year and counts as the 53rd calendar week, as shown in the table below. Example for 53 North American calendar weeks at 365 days Su Mo Tu We Th Fr Sa Su CW 1 01/01 02/01 03/01 04/01 05/01 06/01 07/01 CW 2 to CW 5251 times 7 equals 357 CW 1 of the New Year 29/12 31/12 When are there 54 calendar weeks? 54 Calendar weeks can only occur in leap years in the North American numbering of weeks, and this only happens about every 100 years. If the 1st of January in a leap year falls on a Saturday, for example, this day forms the 1st calendar week. This is followed by another 52 weeks. A leap year consists of 366 days, i.e., 52 weeks and 2 days. So there is one day left, which in this example is Sunday, the 31st of December. This Sunday is then the beginning of the 54th week. Example for 54 North American calendar weeks at 366 days (leap year) Su Mo Tu We Th Fr Sa Su CW 1 01/01 02/01 03/01 04/01 05/01 06/01 07/01 CW 2 to CW 5352 times 7 equals 364 CW 54 31/12 All weeks 2025 and the current week Click here for the Calendar weeks 2025 and the current calendar week. 52 weeks equals 0.996578 year or 52 wk = 0.996578 Year There is 0.996578 year in 52 weeks. To convert any value from weeks into years, simply multiply the weeks by the multiplication factor, also known as the conversion factor which in this case is 0.019165. Thus, 52 weeks times 0.019165 is equivalento 0.996578 year. Week To Year Converter ⇐ Help our site grow by sharing it! To convert a value from weeks to years, just multiply the number of weeks by 0.019165 (conversion factor). Use the formula below to convert from weeks to years: Value in years = value in weeks x 0.019165 Suppose you want to convert 52 weeks to years. In this case, just do the "math" below: Value in years = 52 x 0.019165 = 0.996578 year This calculator answers questions like: How many years are 52 weeks? 52 weeks equals to how many years? How do I convert weeks to years? By how much should I multiply a value in weeks to get the corresponding value in years? What is the formula to convert from weeks to years? Among others. Conversion Table Weeks to YearsWeeks=Years43 weeks=0.82 years44 weeks=0.84 years45 weeks=0.86 years46 weeks=0.88 years47 weeks=0.90 years48 weeks=0.92 years49 weeks=0.94 years50 weeks=0.96 years51 weeks=0.98 years52 weeks=1.00 yearConversions 10 completed53 weeks=1.02 years54 weeks=1.03 years55 weeks=1.05 years56 weeks=1.07 years57 weeks=1.09 yearsConversions 15 completed58 weeks=1.11 years59 weeks=1.13 years60 weeks=1.15 year61 weeks=1.17 years62 weeks=1.19 yearNote: values are rounded to 2 decimal places for clarity. Examples of Conversions between Time Units While every effort is made to ensure the accuracy of the information provided on this website, neither this website nor its authors are responsible for any errors or omissions. Therefore, the contents of this site are not suitable for any use involving risk to health, finances or property.

- cubava
- fida
- the latest research managing yourself pdf download
- https://dongchondia.com/users/files/papife_bumusuovni_zifofetarowo.pdf
- https://sealand-ptpc.com/users/files/36886012618.pdf
- http://topas.lt/users/files/76993199308.pdf
- how do you unlock a lxm thermostat
- http://logisticsnetworks.net/ckfinder/users/files/c61ba019-9d40-4283-a121-0a8b6f7ba80c.pdf
- https://dbjadow.pl/attachments/file/5e39cbbf-2fa5-49d0-9b11-197f4c435e07.pdf
- omn. white in-ear true wireless earbuds with charging case instructions