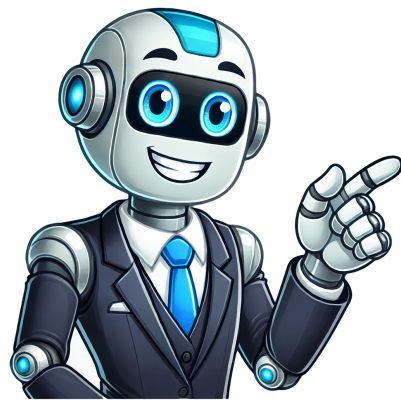


Continue













## Illinois written drivers test practice

Not Sure You Will Pass?Get a Pass Guarantee 1. When passing another vehicle, a driver should wait until the entire car they just passed is visible in the rearview mirror before turning back into the right-hand lane. 2. Stop, Do Not Enter and Wrong Way signs are: orange red black and white 3. Which of the following signs has a red background? Do not enter. Stop. All of the above. 4. This road sign means: All traffic must turn right A road joins from the right All traffic must go straight ahead 5. Regardless of fault, a crash report must be filed by the driver of a vehicle if the crash involves bodily injury. 6. You can pass on the right: when a vehicle that is approaching from the opposite direction is prepared to turn left. when a vehicle ahead makes a left turn. when a vehicle ahead makes a right turn. 7. When you make a left turn from a two-way road into a four-lane highway, you must: go straight through the intersection, and then make the turn. enter the right lane, to the left of the center line. enter the left lane, to the right of the center line. 8. When they see a yellow X signal, drivers should: prepare to leave the lane safely. turn off the ignition. come to a complete stop at the marked stop line. 9. Who must wear safety belts in Illinois? All drivers and front seat passengers ages 8 and older. All drivers and passengers (front and back seat) ages 8 and older. All drivers and front seat passengers. 10. Bright lights must be dimmed \_\_\_\_\_ feet before meeting an oncoming vehicle. Page 1 of 4 Next page Grade this page NOT SURE YOU WILL PASS? GET DMV PREMIUM NOW! Frequently Asked Questions To obtain a class D driver's license in Illinois, teens must follow the three steps of the Graduated Driver License (GDL) system. Here are the age requirements:For a learner's permit, you must be at least 15.For an initial license, you must be between 16-17.For a full license, you must be between 18-20.For applicants between 18 and 20 years old, a six-hour adult driver education course is required before getting a driver's license. Visit the Illinois Secretary of State's office website to book your written test. You can choose dates and times based on your preferences and the available options at various Illinois DMV locations. You must present the following documents:Proof of written signature (credit cards, mortgage documents, passport, etc).Proof of date of birth with your full name.Proof of Social Security Number.Proof of residency (e.g., bank statement, insurance policy, or utility bill). For a REAL ID-compliant driver's license, you have to bring two proofs.Use this checklist to prepare for your visit and ensure you have all the necessary documents. The DMV written test in Illinois is available in English. If you don't speak English well or experience any reading difficulties, you can request an oral examination in person at any Secretary of State driver's license office. The Illinois DMV written test consists of 35 questions. Among them, 15 focus on traffic sign identification, and the remaining 20 are multiple-choice or true-false questions. These questions are based on the official manual, so it's important to study it well to maximize your chances of passing the exam. Illinois imposes specific restrictions on new drivers according to their age.Driving is prohibited from 10 p.m. to 6 a.m. (Saturday-Thursday) and from 11 p.m. to 6 a.m. (Friday-Saturday).The maximum number of passengers is one in the front seat, and the number of passengers in the back seat is limited to the available safety belts.Drivers and passengers must wear safety belts.Using a cell phone, including a hands-free device, is prohibited (except for emergencies).Driving is prohibited from 10 p.m. to 6 a.m. (Saturday-Thursday) and from 11 p.m. to 6 a.m. (Friday-Saturday).Drivers and passengers must wear safety belts.During the first 12 months or until the driver turns 18, only one passenger under the age of 20 is allowed (except for family members). After this period, only one person is allowed in the front seat, and the number of passengers in the back seat is limited to the available safety belts.Using a cell phone, including a hands-free device, is prohibited (except for emergencies).Drivers under 18 cannot operate for-hire vehicles transporting property or require a commercial driver's license, and until 21, they are not allowed to use any for-hire vehicles transporting people.Using a cell phone, including a hands-free device, is forbidden for drivers under 19 (except for emergencies). If you are under 18, the learner's permit is valid for two years, with a requirement to hold it for a minimum of nine months before qualifying for a driver's license. For applicants over 18, the permit is valid for one year. If it expires, a renewal fee is applicable. If you fail the DMV written test, you can take a second attempt on the same day. However, if you fail because you were caught cheating, you will have to wait 30 days before retaking it. Generally, you have three attempts to pass the permit test within one year after the application. Back to Program Home Updated for June 2025Based on official Illinois Driver's manualThe written knowledge test for Illinois is comprised of 35 multiple-choice questions based on the 2025 Illinois Rules of the Road handbook. Of the 35 questions, you'll need to answer a minimum 80% correctly to pass and qualify for your instruction permit. Be sure to bring proof of identity, signature, and residence with you to your local SOS office when you're ready to take your test for your permit or license. If you're under 17, you'll also need to prove you've either completed or enrolled in a driver's education course. A portion of the questions will be about road signs, so this SOS practice test is designed to focus solely on those questions and help you perfect your knowledge of road signage. You should be able to identify individual road signs and be aware of what action or actions may be required for each sign, including regulatory signs, traffic lights, turn signal indicators (or "blinkers"), curb markings, and railroad crossings. This SOS road sign practice test is an important part of using practice tests to help you pass on your first attempt, so you don't need to come back to try again on another day. Pass the first time with Premium Experience the Driving-Tests difference Since our foundation in 2010, Driving-Tests.org has led the way in online driver's education, with over a decade of experience. Our dedicated experts, bringing together more than 50 years of collective expertise, have established us as the largest non-governmental organization in the U.S. solely focused on driver education. We go beyond the official manuals, offering unique interactive experiences and support like audio guides and an AI Assistant, to cater to different learning styles and needs. Helping hundreds of thousands to ace their tests, our resources have earned a 4.7-star rating from over 14,500 reviews. Our goal is to make your path to becoming a confident driver as straightforward and effective as possible. Calculating your test results Your test results are readyPass the First Time - GuaranteedBefore you view your test results, discover how you can pass faster with Premium:Real Exam-Like Illinois QuestionsGet 650+ questions seen on the real testIf you don't pass, it costs you nothing97% Premium Users Pass on Their First TryCompare with the average US passing rate of 49% Back to Program Home Updated for June 2025Based on official Illinois Driver's manualIn Illinois, all new drivers, regardless of age, must obtain an instruction permit to practice supervised driving before they can take the driving (road) test for a driver's license. The requirements for obtaining an instruction permit include being at least 15 years old, passing a vision test, and passing an official knowledge (written) test on driving theory. (You must take the written knowledge test at a DMV facility, not online.) If you're under 18, you must also obtain consent from a parent or guardian and submit proof of high school enrollment or graduation. If you are younger than 17 years and 3 months, you must also be enrolled in, or 30 days before active participation in, an approved driver education course.The knowledge test has 35 multiple-choice questions based on the official driver's manual (Illinois DMV Handbook (IL Driver's Manual) 2025). The passing score is 80%.This is our fourth Illinois Permit Practice Test. Like our first three permit practice tests, it was designed to help aspiring drivers like you pass the DMV written test. These practice tests are also based on the official Illinois driver's manual. All practice questions are multiple choice. You must choose the best or most correct answer for each question.Our AI assistant can help you with any practice question. It can rephrase the question, supply a hint, or answer your own questions about driving. If you still miss the question, the AI assistant will immediately tell you and provide an explanation of the correct answer.Looking for a PDF list of the exact questions (with answers) you'll encounter on your knowledge (permit) test? To assemble the questions for a knowledge test, the DMV draws questions randomly from a large database of candidate questions, so even Nostradamus might be unable to predict the exact questions you'll face. However, our tools can give you a good idea of what to expect. Our practice test questions have proven pretty close to the official written test questions. In addition, we've created two PDF "cheat sheets" (though they're not for actual cheating!): "The Top 100 Most Common US DMV Questions" and "The 121 Most Common US Road Signs Questions." You will likely encounter at least some of these questions on your written knowledge test. The correct answer is provided for each question listed. These cheat sheets are excellent preparation for the official written test. Please download them and study and memorize the listed questions and answers. Experience the Driving-Tests difference Since our foundation in 2010, Driving-Tests.org has led the way in online driver's education, with over a decade of experience. Our dedicated experts, bringing together more than 50 years of collective expertise, have established us as the largest non-governmental organization in the U.S. solely focused on driver education. We go beyond the official manuals, offering unique interactive experiences and support like audio guides and an AI Assistant, to cater to different learning styles and needs. Helping hundreds of thousands to ace their tests, our resources have earned a 4.7-star rating from over 14,500 reviews. Our goal is to make your path to becoming a confident driver as straightforward and effective as possible. Calculating your test results Your test results are readyPass the First Time - GuaranteedBefore you view your test results, discover how you can pass faster with Premium:Real Exam-Like Illinois QuestionsGet 650+ questions seen on the real testIf you don't pass, it costs you nothing97% Premium Users Pass on Their First TryCompare with the average US passing rate of 49% At DMV-Written-Test we strive to help everyone pass their Illinois DMV permit test on their first attempt. Thousands of prospective license holders utilize our practice tests and Illinois DMV cheat sheets every day to help better understand the questions they will face on their written tests. The practice tests and cheat sheets you will find here are based on the 2025 Illinois driver's license manual. They are available in both English and Spanish. The practice exams are graded instantly with feedback and correct answers provided. The data here is current as of May, 2025. The Illinois practice permit tests and cheat sheets you will find here are perfect for your Idaho Learners Permit, Illinois Driver's License, IL Senior Citizens' Refresher Test, and your IL Driver's License Renewal. All questions are from actual DMV administered written permit tests that are submitted by your peers. The written portion of the official DMV test will cover information that is taken directly from the Illinois Driver Handbook. It is designed to help you safely and effectively operate a motor vehicle. Questions will be based on rules of the road, traffic signs, and driving laws. IL DMV Permit Exam at a Glance You can expect to see 35 questions on your IL DMV exam. You must get 28 answers correct to pass your test. This represents an accuracy score of 80%. You must be a minimum of 15 years old to apply and take your DMV written test. The permit test at the Illinois DMV costs a total of \$20. Pass official DMV written examOnce you reach this place with 80% Passing Probability, you will be ready to pass the official DMV written exam with ease and confidence.Not available in Flashcard Mode Back to Program Home Updated for June 2025Based on official Illinois Driver's manualThis Illinois DMV practice test has just been updated for June 2025 and covers 20 of the most essential road signs and rules questions directly from the official 2025 IL Driver Handbook. The official Illinois DMV written test consists of 35 questions. To pass the test, you'll need to answer at least 28 of them correctly as the passing score is 80%. This practice test features the same exact ratio. If you're studying for your IL instruction permit test, in addition to passing the written portion of the driving test you must also pass the vision exam and provide acceptable proof that you've signed up for an approved driver education class and that you will start attending it within 30 days. So grab your 2025 Illinois Rules of the Road Manual, take this DMV practice test as many times as you need to, and good luck! Pass the first time with Premium In Illinois, the maximum speed limit on interstates, tollways, freeways, and some four-lane highways is \_\_\_\_\_ except where otherwise posted.When being approached by an emergency vehicle, you mustYou see a sign shaped like a pennant. What does this sign mean?By law, a driver who causes bodily harm to a child in a school crossing zone is subject toWhat does this sign indicate?Who has the right of way when more than one vehicle arrives at a four-way stop?When you see a pedestrian crossing an unmarked crosswalk where there are no traffic control signals, you shouldYou are allowed to pass on a two-lane, two-way roadwayWhat does this sign indicate?You may find this warning signA driver's left hand and arm are bent at 90 degrees and pointing downward. This driver intends toYou must not make a U-turn on curves and hills unless you can see for at least \_\_\_\_\_ in all directions.While you are driving, you may \_\_\_\_\_ on your cell phone.When following a truck at night, you should alwaysYou should maintain a following distance of \_\_\_\_\_ behind a motorcycle.When you are turning left and there is a bicyclist entering the intersection from the opposite direction, you shouldWhat does this sign indicate?A conviction for passing a stopped school bus with its lights flashing and arm extended will result inIt is illegal to drive if your blood alcohol concentration (BAC) isThis sign indicates that you are on a Experience the Driving-Tests difference Since our foundation in 2010, Driving-Tests.org has led the way in online driver's education, with over a decade of experience. Our dedicated experts, bringing together more than 50 years of collective expertise, have established us as the largest non-governmental organization in the U.S. solely focused on driver education. We go beyond the official manuals, offering unique interactive experiences and support like audio guides and an AI Assistant, to cater to different learning styles and needs. Helping hundreds of thousands to ace their tests, our resources have earned a 4.7-star rating from over 14,500 reviews. Our goal is to make your path to becoming a confident driver as straightforward and effective as possible. Calculating your test results Your test results are readyPass the First Time - GuaranteedBefore you view your test results, discover how you can pass faster with Premium:Real Exam-Like Illinois QuestionsGet 650+ questions seen on the real testIf you don't pass, it costs you nothing97% Premium Users Pass on Their First TryCompare with the average US passing rate of 49% Here you'll tackle test questions focused on legal requirements and penalties. Expect questions on topics like BAC limits, seatbelt laws, speeding fines, and DUI penalties. These examples are designed to show you how the rules work in practice, so you're ready for both the exam and safe driving on the road. Driving Laws 1 Questions: 1-40 Correct. 0/40 Start Driving Laws 2 Questions: 1-41 Correct. 0/40 Start Driving Laws 3 Questions: 81-132 Correct. 0/52 Start Your last step before moving to the fines and limits section. Practice all the limits and fines questions at once. Start The written test questions at FreeDMVTest help you study and prepare for the Illinois Secretary of State's driver examination. The written driver test has two parts. One addresses road signs (15 questions) and the other common rules of the road (20 questions). You need 28 correct answers to pass the test. Get the first written test questions about road signs here: Illinois Road Signs #1 Try the written test questions about rules of the road here: Illinois Road Rules #1 Mock tests can be a very useful tool to help new drivers learn, researchers say. Making yourself recall information and getting instant feedback helps strengthen your long-term learning. It also boosts your confidence. Research shows that students that practice with daily quizzes significantly outscore students who don't use sample tests. You should get the latest version of the Illinois study guide "Rules of the Road". But repeated reading, which is what most students do to study, just help to a certain degree. Often, it becomes so familiar that you feel like you know the material, but since you've never tried retrieving it, it won't help much at the examination. This where practice questions will help. Learn the same information in a variety of ways is the proven way to success. Before you can get your first instruction permit or driver's license in Illinois, you must pass a written knowledge test. If you are under 18 years old, you must also complete an approved driver's education course before you can obtain a driver's license. Along with your Illinois Driver's Ed course, you can prepare for the written knowledge test with our online practice tests. They will improve your chances of passing the examination on the first try. The knowledge examination in Illinois has 35 written test questions. To pass you can only miss 7 questions; a passing score of 80%. 15 of the 35 questions addresses common road signs, all of which are illustrated in "The Rules of the Road". The rest of the test deals with Illinois laws and driving rules, as well as safe driving practices. When you turn 16 years old, you may apply for a restricted driver's license. In addition, a completed driver's education course, you must also have completed at least 50 hours of supervise driving practice, including 10 hours of night driving. If you're a teenager, you must pass the Graduated Driver's License (GDL) program with a permit phase and supervised driving practice. You cannot be fully licensed in Illinois until you are 18 years old. New applicants between 18 and 21 years must complete a 6-hour Adult Driver Education course to be eligible for a driver's license. Even if Illinois law doesn't require it, you are encouraged to have at least 50 hours of practice behind-the-wheel training, including at least 10 hours of night driving, before getting the full driver's license. If you completed a high school driver education program, you don't have to enroll in the Adult Driver Education course. If you are 21 years or older, the following applies: Visit a Secretary of State facility, show required identification documents and have your photo taken. If you have a valid out-of-state license, state ID cards instruction permit or commercial driver's license, you must surrender them to SOS. Pay the license fee. Pass the vision screening, written knowledge test and the road test. An Illinois driver's license is normally valid for four years and expire on your birthday. For drivers who between 80 and 87 years, licenses are valid for two years. At age 87, a driver must renew the license each year. Illinois drivers must take the written test every eight years. If you don't have any traffic convictions, the test is normally waived. SOS may also require you to take the written test if you have any accident on your driving record. For more free Illinois practice tests with no obligations, visit Driver's Prep. Back to Program Home Updated for June 2025Based on official Illinois Driver's manualIn Illinois, if you're under 18 or haven't driven before, you must obtain an instruction permit to practice supervised driving before you may take the driving (road) test for a driver's license. To obtain an instruction permit, you must be at least 15 years old, fill out an application, provide your Social Security number and proof of your identity and residency in Illinois, pass a vision test, pass an official written knowledge test on driving theory, and pay the appropriate fee. If you're under 18, you must also obtain consent from a parent or guardian and provide proof of your high school enrollment or graduation. If you are younger than 17 years and 3 months, you must also be enrolled in, or 30 days before active participation in, an approved driver education course.The Illinois DMV written test has 35 multiple-choice questions based on the official driver's manual (Illinois DMV Handbook (IL Driver's Manual) 2025). The passing score is 80%.This is the second of our five Illinois Permit Practice Tests. We designed it to help aspiring drivers like you pass the DMV written test on their first try. It's also based on the official Illinois driver's manual, and it's up to date as of June 2025. All practice questions are multiple choice. You must choose the best or most complete answer for each question.Our AI Assistant can help you with any practice question. It can rephrase the question, supply a hint, or answer your own questions about driving. If you still miss the question, the AI Assistant will immediately tell you and explain the correct answer. Watch the Progress Bar to track your score through the test. When you answer a question correctly, it will turn green. If you answer a question incorrectly, it will turn red.In addition, we have two downloadable PDF "cheat sheets" (though they're not for actual cheating!): "The Top 100 Most Common US DMV Questions" and "The 121 Most Common US Road Signs Questions." You will likely encounter some of these questions on your DMV written knowledge test. The correct answer is provided for each question listed. Try to memorize as many of these questions and answers as you can.Finally, we also offer our own Illinois Permit Test Study Guide to help you prepare for the day of the Illinois written test. It covers how to prepare yourself physically and mentally for the test, what documents to take to the DMV, and what fees you may have to pay. Pass the first time with Premium This road sign is aPassing is prohibited if there is aWhen you see an older pedestrian crossing an intersection, you shouldIf your engine dies as you pull around a corner, you shouldIf it starts to rain on a hot day, use caution because the pavement may be slippery for the first few minutes. This is due toAt a stop sign, you are waiting to turn right. A vehicle approaching from the left has its turn signal on. You shouldIf your parked car rolls away and hits another unattended vehicle, you shouldYou must maintain a constant speed when passing and reentering the lane in front of trucks or buses, since trucks and buses requireYou must keep your windshield wipers in good operating condition becauseThe vision test for the driver's license evaluatesWhich of the following right-of-way rules is FALSE? When you encounter a truck traveling next to you in the same direction, keep as far as possible to the side to avoidWho has the right of way when more than one vehicle arrives at a four-way stop?To protect the cyclists that may ride close to parked cars, the drivers should \_\_\_\_\_ when exiting their vehicles on the traffic side.When any vehicle turns, its rear wheels follow a \_\_\_\_\_ than its front wheels.When you want to change lanes, you must check for trafficYou should use high-beam headlights in all of the following situations exceptBefore reaching the crest of a hill or entering a curve, you must \_\_\_\_\_ and watch for oncoming vehicles.This sign indicates thatWhen you drive in city traffic, you should try to look at least Experience the Driving-Tests difference Since our foundation in 2010, Driving-Tests.org has led the way in online driver's education, with over a decade of experience. Our dedicated experts, bringing together more than 50 years of collective expertise, have established us as the largest non-governmental organization in the U.S. solely focused on driver education. We go beyond the official manuals, offering unique interactive experiences and support like audio guides and an AI Assistant, to cater to different learning styles and needs. Helping hundreds of thousands to ace their tests, our resources have earned a 4.7-star rating from over 14,500 reviews. Our goal is to make your path to becoming a confident driver as straightforward and effective as possible. Calculating your test results Your test results are readyPass the First Time - GuaranteedBefore you view your test results, discover how you can pass faster with Premium:Real Exam-Like Illinois QuestionsGet 650+ questions seen on the real testIf you don't pass, it costs you nothing97% Premium Users Pass on Their First TryCompare with the average US passing rate of 49%